

# Historic, archived document

Do not assume content reflects current scientific knowledge, policies, or practices.





# FALL GUIDE TO GOOD ROSES BULBS and PERENNIALS



## THE CONARD-PYLE CO.

*Star Rose Growers*

Robert Pyle, Pres.

West Grove, Pa.



## Brilliant Hardy Chrysanthemums

**The Most Desirable Fall Flowers**

You can give a gay appearance to an otherwise somber autumn garden by planting Hardy Chrysanthemums. For indoor decoration they are fine, as the flowers last a long time, and the spicy, healthy, outdoor fragrance is always exhilarating and refreshing.

**Price, Field Plants, 35 cts. each, postpaid**

Here are five distinct varieties:

**Tints of Gold.** Very early; large; yellow, tinted with bronze.

**Lillian Doty.** Light pink.

**Red Doty.** Wine-red.

**Diana.** Snow-white.

**Hilda Canning.** Bronze.

**OFFER No. 2.** 1 each of above 5 Chrysanthemums, \$1.50; or 5 of each, 25 in all, for \$6, postpaid.

See 12 varieties offered on page 21

## Fragrant Hardy Phlox

**For Summer and Fall Bloom**

Hardy Phlox are needed in every perennial garden, and if you have a bed, say, alongside a walk or some conspicuous place where you want a brilliant color effect, just plant an entire bed of Rhijnstroom. You will find it enchantingly lovely.

**Price 35 cts. each, postpaid**

If you wish an assortment of colors here are four of the best:

No. 1. **EUROPA.** White, with deep crimson eye.

No. 2. **THOR.** Salmon-pink, with a scarlet glow.

No. 3. **W. C. EGAN.** Lilac with bright solferino eye.

No. 4. **RHIJNSTROOM.** Carmine-rose color.

**OFFER 2a.** The set of four for \$1.25; or 5 of each, 20 in all, \$5 postpaid.

See 9 varieties offered on page 21



# Plant ★ Star Roses This Fall

BE REWARDED WITH QUANTITIES  
OF ROSES ALL NEXT SEASON

IN THE minds of many people there still remains an old-time fear, or superstition, that Roses planted in the fall will not live through the winter. There is little basis for this idea. The Rose is really a type of flowering shrub—and people have no fear of planting shrubs and trees in the fall. A Rose is a high-bred type of shrub that, like many other shrubs, does require some winter protection. If the same protection is given to Roses newly planted in the fall as is given to other plants, there need be no fear of winter-killing. Roses, budded Roses, such as our Star Roses, can be adequately protected merely by hilling the earth around the stalks to a height of from 6 to 9 inches. There may be local conditions, such as soggy soil, which are injurious to Rose-growth and which may result in the loss of the Rose plant in a hard winter, but these failures are not to be confused with the cold of the winter. In any case, you run no risk, for Star Roses are guaranteed to grow and bloom.

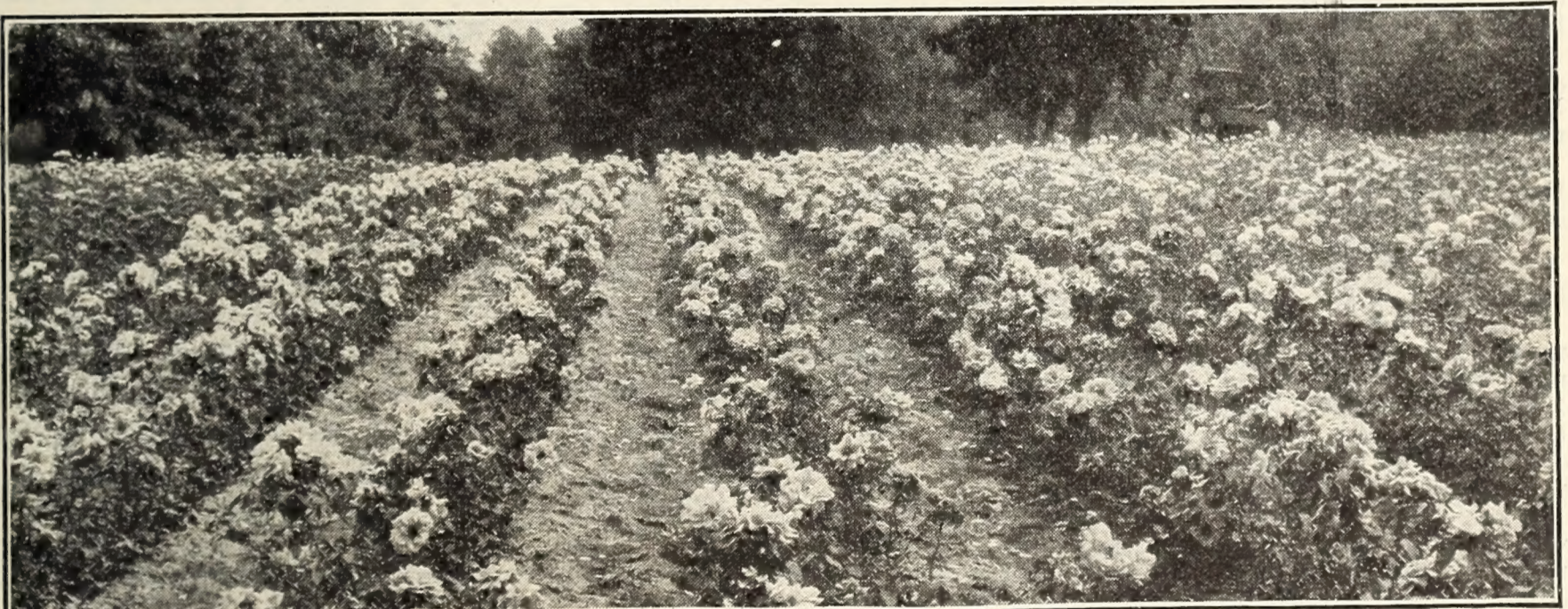
Last fall we planted over 600 Star Roses in our own display Rose-Garden. Every Rose came through the winter splendidly. Not a branch seemed touched until near the end of March, when withering, drying winds blackened the majority of branches unprotected by the hilled earth. The blackened branches looked discouraging, but beneath the earth-covering the plants were plump, green, and healthy. Those fall-planted roses, when spring came, grew with astonishing vigor, and we had a glorious show for the hundreds of visitors who came to the Star Rose-Garden. Even through the summer this wonderful showing continued, and we have every promise of quantities of gorgeous blossoms in this garden until hard frost.

Fall planting is desirable for many reasons. It gives the Rose plants an opportunity to get the "feel" of the ground, for the roots to become well placed and all ready to grow with the first spring days.

Because of our own repeated experiences, we feel that you will make no mistake in fall planting. Indeed, some highly successful Rose-growers, even in Michigan and Maine, get their plants in the fall, direct from Star nurseries, and when planted and pruned, cover them with soil completely. With such treatment Star plants have come through the severest northern winters, plump, fresh, and vigorous, ready for an early start.

We heartily recommend fall planting for Star Roses. They are sturdy and they are guaranteed. Order at once!

This picture shows only part of our field of Souv. de Georges Pernet Roses



## ★Souv. de Georges Pernet Rose (Shown above, also in natural color on front cover)

The blooms are very large, double, well-formed, and freely produced. They have a heart-appealing color of brilliant pink, overlaid with an orange glow, which turns to shining carmine-pink when the sweetly perfumed flower is fully open. There is such a sheen in the color that the petals seem to be made of glistening Oriental silk. The plant is rather spreading in growth and makes very strong, thorny canes, furnished with healthy, disease-resistant, dark green foliage. Rose enthusiasts who compete at Rose shows need this new variety, for it is a wonder for size, form, and color, and a prize-winner. (See front cover.)

*The Conard-Pyle Company:*

Covington, Ohio, July 1, 1926  
I have between three and four hundred roses; most of the Hybrid Teas, or at least the best performers, came from The Conard-Pyle Company. We think Souv. de Georges Pernet is a wonder. I had a bloom from it 6 inches across, and my friend, Mr. Shaffer, had one bush with 20 of these immense blooms on it at one time.—CLYDE O'ROARK.

**Price \$1.50 each, 5 for \$7, delivery not prepaid**

# Actually Miles and Miles of



Photographed in July, 1926

Here, in one picture, which we have had to cut in two, is shown a part of one of our

## What C.-P. Customers Write.

### FROM MINNESOTA

May 19, 1926

Last summer I had over 200 Rose bushes in my Rose-garden, purchased from five different growers.

During the summer and winter I gave them all the very same treatment. Today every Rose bearing the little white celluloid star is alive and doing well, where 20 per cent of those from the other growers winter-killed. Question, Why? Is it that white star which caused the miracle?

Thanking you for furnishing me real Rose bushes, I am,—J. I. V., Winona, Minn.

### FROM BUFFALO, N. Y.

Order No. 15762

May 11, 1926

I have been criticized for using so many of your Roses in my garden and not buying them from local growers, but I think my Rose-garden will be among the best on the Lake Shore this summer. You might be interested in knowing that my Roses came through the winter almost 100 per cent. All beds were well covered with manure, but they are exposed to 100 miles of open water on Lake Erie, as my summer place is right on the side of the Lake. I think that this is doing pretty well.—K. W. W., Buffalo, N. Y.

### FROM OLD KENTUCKY

Order No. 26994-25

June 29, 1926

I should have written you a month ago that all of the 106 Rose Plants I bought from you last fall lived and were a shower of bloom this spring. The praise is entirely yours, because I am by no means a skilled Rose-gardener. Thank you for sending me such splendid plants.—H. W. B., Louisville, Ky.

The above picture may seem to some like the wholesale growing of Roses, but if ever there was a crop that responds to individual care for *every individual plant*, it is the Rose.

From the time we start, throughout the long three years until you get the finished plant, "vigilance" is our watchword, and every possible precaution is taken to ward off what might hurt, every possible aid is given to feed and foster strong, natural growth, and to produce rugged, healthy STAR ROSE specimen plants.

This growing of tens of thousands of Roses for American gardens is a fascinating story, if only we had room to tell it all. To begin with, the best of Chester County soil, grown rich with cover crops of clover, is, in the autumn before planting, plowed under 18 inches deep to let the winter freezes kill all grubs and eggs and pulverize the upturned soil. Then, for example, we do not plant carelessly with a planting-machine, but every single Rose plant is set

### FROM PITTSBURGH

March 17, 1926

The 50 field-grown, two-year-old Roses purchased of you in the autumn of 1925 came duly to hand and were planted. They were the finest looking Rose bushes I have ever planted. I had 50 others last fall from another grower, also very nice stock, but not as good as yours.—C. M., Pittsburgh, Pa.

### FROM OHIO

April 10, 1926

Of the 100 Roses I have received, I want to say that no other nursery firm sends out such wonderful healthy stocks and they all do well. Of my order last fall, I did not lose one through the long winter, owing to such fine plants.—J. S. F. Massillon, Ohio.

AUTUMN, 1926 · TIME TO PLANT ROSES

# Rows of ★ STAR ROSES



fields of ★ Star Roses. Think of the miles of Roses these rows would make if put end to end

out by hand, one man preparing the hole, a second one planting, and a third finishing it off.

That is only the first step. The other steps—and there are many of them before we reach the star at the top—are those that the ordinary Rose-growers too often fail to climb. These steps are made up of unceasing work in the face of every kind of weather, from blazing sun to frost and snow; work to ward off the first approach of any blight that might interfere with the season-long excellence of a full leaf system, with which is built up strong branches and still stronger roots.

So, it has taken our todays and yesterdays of experience, end on end, for years, to gather together all that goes into the "Know How" of growing the Star Roses we now produce, and which our many friends declare to be quite above the average, Roses that have earned the right to wear the star label, the C.-P. mark for a superior Rose.

September 1, 1926.

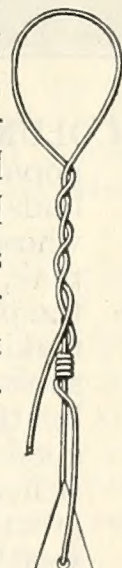
*Roscoe Pyle*  
PRESIDENT

## OUR ★ GUARANTEE

*Such As Has Been Made by No Other Rose-Grower*

We guarantee Star Roses to bloom the first natural blooming period after planting, or you may have your money back.

(Hybrid Tea, Tea, and Polyantha Roses are guaranteed to bloom the first season after they are planted. Hardy Climbing Roses, Hybrid Perpetuals, and some Roses in other classes cannot be expected to bloom until the second year after planting.) This guarantee does not cover loss from admitted neglect on the part of the purchaser.



WHAT THE NATIONAL BANK AND TRUST CO. OF WEST GROVE, PA., SAYS OF US

"To Whom It May Concern:

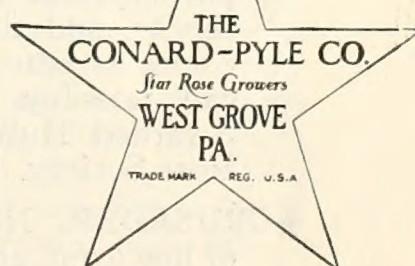
It affords us pleasure to testify to the high standing and character of The Conard-Pyle Co. It is composed of practical, up-to-date nurserymen and Rose specialists. In our opinion any statement they may make or any agreement into which they may enter can be absolutely relied upon."

July 27, 1926.

R. B. Ewing, Cashier.

## OUR STAR TAG

The durable Star Tag on every Star Rose is the symbol of our guarantee. It is the *recognized sign of quality* in the Rose world and can be used only by The Conard-Pyle Company. Every Star Tag carries the name of the Rose to which it is attached, thus adding the joy of always knowing the name of every blooming Rose.



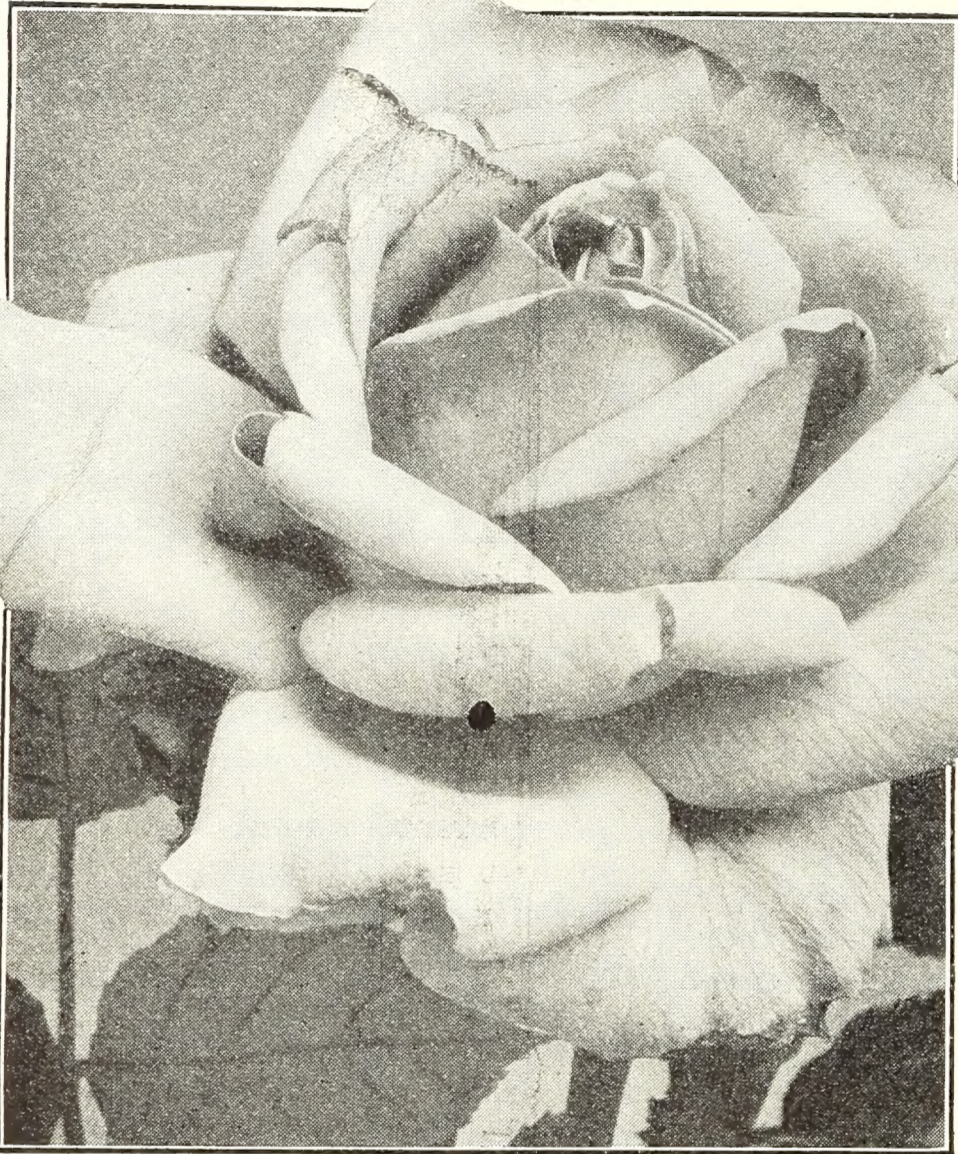
The name of the Rose is on the Reverse Side of the Celluloid Tag

THE CONARD-PYLE CO. • *Star Rose Growers* • West Grove, Pa.

# Everblooming Hybrid Tea Roses

In this strong, free-flowering race the Rose hybridizers have given us much of the hardiness of the Hybrid Perpetuals combined with the free, if not constant flowering habit of the Teas. Blending these two classes has developed rare and beautiful colors undreamed of only a few years ago. On this and the following five pages you have the best representative varieties to select from for planting this fall.

SEE PRICES AT FOOT OF PAGE



Columbia. An ideal Rose for cutting

★**AMERICA (HILL'S)**. Originally a cut-flower Rose for florists, this Rose has quickly made its way into the garden where its behavior varies greatly depending on locality. Produces large, finely shaped flowers of bright rose-pink, delicately shaded, borne on long rigid stems. \$1 each.

★**BETTY**. A dependable Rose with beautiful, coppery buds of exquisite form, and large, very attractive salmon-pink flowers with a golden sheen; golden yellow center. The color fades quickly in hot weather, and then the flowers are apt to hang their heads. It is very fine in the fall. In our trial-garden, Betty is always picked out as one of the daintiest colored Roses. N. R. S. Gold Medal. \$1 each.

★**BETTY UPRICHARD**. New. An outstanding new Rose with copper red buds, opening to an exquisite semi-double flower, rich deep salmon in color with orange base, the reverse of the petals carmine. In the open flower the center can be seen but the firm-textured petals do not flatten out except in hot dry weather. A vigorous-growing, continuous bloomer with strong tea fragrance. Fine for cutting. \$1.50 each.

★**COLUMBIA**. (Illustrated above.) An extremely popular American-bred Rose. Its large, firm buds open very slowly to wide, impressive flowers whose color deepens as it expands to a rich rose-pink, slightly tinged with yellow at the base of the petals. The stems are long and very strong, making it ideal for cutting because of its heavy substance and fine lasting quality. It is delightfully fragrant. This Rose is particularly good in the cooler seasons, when the color is richer and it produces flower after flower with great freedom. It does not bloom so well in hot weather, when the buds may be short and puckery, and the flowers not so good. It has few thorns, and the foliage is healthy. Columbia comes as near to perfection for the amateur as can possibly be expected from any Rose. Awarded Hubbard Gold Medal of American Rose Society. \$1 each.

★**CRUSADER**. Notable for its full, pointed flowers of fine form, great broad petals, and heavy substance. Rich crimson-red, with somewhat lighter shading toward the center. The most perfect blooms come in cool weather. Makes a splendid cut-flower. \$1 each.

★**DUCHESS OF WELLINGTON**. The most serviceable yellow Rose to date. In spite of the recent avalanche of yellow varieties, good yellow Roses are rare. It will take a mighty good one to dethrone this queenly old variety. Its lovely buds are tinted with apricot and are very long and pointed. They unfold slowly, changing from deep orange-yellow to lemon and lighter shades. Half-open, there is nothing more beautiful than its deep blooms of glowing yellow, but the open flower is deficient in petals. The flowers are richly tea-scented, and freely produced, but sometimes hang their heads. Duchess of Wellington is not perfect but it is a top-of-the-list, thoroughly tested yellow Rose, unusually free from pests and will be indispensable for many years. \$1 each.

★**EDEL**. A strong-growing Rose, producing very double ivory-white flowers of notable quality. Makes a magnificent bloom. A vigorous grower, and quite healthy, although the flowers sometimes nod and fail to open in wet weather. In our nursery rows it is continuously in bloom all summer and continues to bloom until cold weather. N. R. S. Certificate of Merit. \$1 each.

**PRICES (UNLESS OTHERWISE NOTED),** ★2-YEAR, FIELD-GROWN, STAR SIZE ROSES, \$1 each, 10 for \$9, 100 for \$80. Delivery not prepaid.



# Everblooming Hybrid Tea Roses

SEE PRICES AT FOOT OF PAGE

- ★**ELVIRA ARAMAYO.** Pernet. A new Rose of intense Indian-red color. Buds long and pointed; flower of the cactus type with quilled petals. Freeblooming, and gorgeous for brilliant color effect when massed. Bagatelle Gold Medal. \$1.50 each.
- ★**ETOILE DE FRANCE.** A sparkling crimson-red Rose whose cheerful flowers ride high on graceful stems. The buds are shapely, the flowers large, unusually double and richly fragrant. Splendid for cutting. The plant grows well, is one of the most hardy, and has more points in its favor than any other red Hybrid Tea. \$1 ea.
- ★**FEU JOSEPH LOOYMANS.** Pernet. A beautiful new Rose with extra-large, long-pointed buds of pleasing Indian-yellow color, combined with tints of apricot. The flowers are perfectly formed and come on long straight stems. Much admired by visitors to our rose garden. \$2 each.
- ★**FLORENCE PEMBERTON.** Large, creamy white flowers with shadings of delicate lilac-pink—one of the most beautifully formed Roses. Keeps splendidly when cut. N. R. S. Gold Medal. \$1 each.
- ★**FRANCIS SCOTT KEY.** (See illustration.) The color is bright crimson which changes to bluish crimson as the flower ages. It is a wonder for size, and no other variety surpasses it for fullness and perfection of form. It is unusually fine in the fall. \$1 each.

- ★**FRIEDRICHSRUH.** A profuse blooming, almost black-red Rose with flowers that darken as they grow older. It has rosette form with short petals but is full to the center. The delightful fragrance alone makes this a favorite and the color is most attractive. \$1 each.
- ★**GENERAL-SUPERIOR ARNOLD JANSSEN.** A fine, upstanding Rose of glowing carmine, darker than pink but not quite crimson. The well-formed buds open slowly into big sweet-scented flowers which hold their color well. The bush is vigorous, quite hardy, and little subject to disease. Its most serious fault is its long name. \$1 each.
- ★**GEORGE C. WAUD.** Striking light red blended with orange, the flowers of this Rose are large, very double, usually perfect in form, and with petals of fine substance. The color seldom "blues." Its fragrance is pleasant and spicy. The stems are long and strong. It is good early in the season and is particularly fine in autumn; the summer bloom is scant and off-color. A good stocky grower and quite hardy. N. R. S. Gold Medal. \$1 each.
- ★**GOLDEN EMBLEM.** Pernet. Another clear yellow Rose, the buds of which are usually marked with a narrow stripe of deep carmine; not fully double, but of better form than most of this type, and does not hang its head. Sweetly fragrant, but a somewhat shy bloomer, and has the glossy foliage of this class. N. R. S. Gold Medal. \$1 each.



Francis Scott Key. Great Red Blooms

- ★**GORGEOUS.** This Rose is extremely well named, for it is gorgeous in size, form, and color, which is soft orange, flushed with copper, coral-red and shrimp-pink. The flowers are very large, double, and borne on erect stems. \$1 each.
- ★**GRANGE COLOMBE.** A beautifully formed flower of soft ivory-white, with fawn-colored center. As the flower expands it becomes slowly white. \$1 each.
- ★**GRUSS AN TEPLITZ.** Happy, cheery, and most friendly of all roses! It needs a place by itself where it can spread its branches wide and hang out its fragrant velvety crimson blooms. Seldom out of bloom, and intensely fragrant with the old sweet Rose perfume that everybody loves. \$1 each.
- ★**HADLEY.** Rich, glorious red; shading to velvety purple. Flower is double, of fine form, and very sweet. If you will cut the buds early, you will find little reason to object to its bad habit of losing its fine color when the flower ages. A moderate grower and not a liberal bloomer. However, practically every bloom comes perfect and it is a gem for cutting. A. R. S. Gold Medal. \$1 each.

**PRICES (UNLESS OTHERWISE NOTED), ★2-YEAR, FIELD-GROWN, STAR SIZE ROSES,**  
\$1 each, 10 for \$9, 100 for \$80. Delivery not prepaid.

# Everblooming Hybrid Tea Roses See prices at foot of page

★**HOOSIER BEAUTY.** Big, torch-like blooms of dusky velvety red, opening from glowing slender buds; quite double, with wide-spreading butterfly petals surrounding an exquisite center. Retains its color well, and its full and fine perfume lasts until the petals fall. Even in the garden it does not "blue" so badly as many red Roses. Not a prolific bloomer, but may be depended upon to furnish quite a number of fine velvety red flowers. \$1 each.

★**H. V. MACHIN.** (See illustration.) This Rose makes a hearty splash of bright, true red, very brilliant, with flowers firmly set on sturdy upright stems. The large buds are very dark, and remain in the lovely half-open state for several days. The open Rose is fully double, but much brighter than the bud, and is not very fragrant. The color is apt to "blue." The flowers come in crops, two or three times a season. N. R. S. Gold Medal. \$1 each.



H. V. Machin. A vivid red Rose that pleases everyone

★**ISOBEL.** The delight of everyone who admires an artistic flower. Large, single blooms that do not open flat but retain a cupped shape. Bud and fresh flowers are rich orange-red which tones to lovely wild-rose-pink; base of petals buttercup-yellow beneath a jeweled setting of golden anthers. Blooms continuously with strong tea fragrance. \$1 each.

★**KAISERIN AUGUSTE VIKTORIA.** The flowers are very double, and are white, tinted with lemon. A very hardy but not a strong-growing bush. The standard of perfection in form, this Rose is sweet-scented and has petals of unusual substance and unequalled color. \$1 each.

★**KILLARNEY QUEEN.** Considered the best of all the Killarney sports because of its somewhat fuller flowers. It is a sprightly pink, and brightest in hot weather. The bud has the same lovely form as all the Killarneys, but slightly fuller, and is sweetly perfumed. The young growth and foliage is beautiful bronzy green. Very beautiful when cut in bud form. \$1 each.

★**K. OF K. (Kitchener of Khartoum).** This brilliant Rose was named for the late Lord Kitchener of England. The color is a striking, intense vivid scarlet, with a velvety sheen, making it stand out like a *beauty-spot* in a garden. The flowers are large, with a double row of petals. You can rely on this Rose for almost continuous bloom all summer. \$1 each.

★**LADY ALICE STANLEY.** A noble Rose of largest size and finest shape. Exquisite flesh-pink, shaded with rich coral in the center and on the reverse of petals. Flowers are borne on short, sturdy stems—fine for cutting. Strong growing, healthy, with broad, distinctive foliage seldom attacked by insects. A most dependable Rose to use in solid beds, as it blooms freely and every flower is perfect. \$1 each.

★**LADY URSULA.** (See illustration, page 10.) A very dependable, almost flawless Rose, distinguished by extremely vigorous growth. Practically immune to disease. Blooms continuously into freezing weather. Flowers of medium size, light flesh-pink, with shell-like petals reflexing from a delicately shaped bud. Lasts well when cut. \$1 each.

★**LADY ASHTOWN.** Brilliant shining pink with a golden underglow, unsurpassed in Rose colors. Flower moderately large, with a fine, high-pointed center, borne singly on erect stems. Blooms abundantly over a long season, but flowers are apt to lose shape in hot weather. It is a glorious Rose in late summer and fall. Bush grows lustily, is very hardy. \$1 each.

★**LOUISE CATHERINE BRESLAU.** Pernet. Astonishing in color. Salmon-red buds, opening to large flowers of orange-pink, glowing with yellow and copper. Double, but open cupped form when fully expanded. Growth bushy and vigorous; foliage glossy. Repays extra care and is effective in beds. You should dust consistently with "Star Rose Dust" to prevent black-spot and loss of foliage. \$1 each.

**PRICES (UNLESS OTHERWISE NOTED),** ★2-YEAR, FIELD-GROWN, STAR SIZE ROSES, \$1 each, 10 for \$9, 100 for \$80. Delivery not prepaid.

# Everblooming Hybrid Tea Roses

See prices  
at foot of  
page

★**LOS ANGELES. Pernet.** (See illustration.) Alike attractive in bud and bloom, and showing shades of salmon-pink, apricot and orange almost impossible to describe. It is remarkable for its brilliant color and beauty of form. It was awarded the coveted Gold Medal at the Bagatelle Gardens in Paris in 1918, and is, perhaps, the most popular Rose of American origin. In our trial-garden this Rose typified Rose perfection this year. \$1 ea.

★**MME. ALEXANDRE DREUX. Pernet.** New. This is a captivating Rose with deep rich color, like the skin of a ripe tangerine orange. A profuse bloomer with lovely long buds and the flowers never fade white. Blooms are not large but they are perfectly formed and keep a long time when cut. \$2 each.

★**MME. BUTTERFLY.** Delicately modeled flowers of tender pink and gold; one of the sweetest and most pleasing Roses. Its lovely spiral buds slowly unfold into big, full-petaled flowers of charming shape and dreamy color, very highly scented, and lasting unusually long. A steady bloomer, and quite hardy. A. R. S. Certificate of Merit. \$1 each.

★**MME. CAROLINE TESTOUT.** (See illustration, page 10.) The "grand old lady" of Rosedom, and a general favorite everywhere. It is unbeatable in the cooler regions, where it grows most vigorously and covers itself with its silky globular flowers. The flowers are of large size, bright rose-pink, and delightfully fragrant. \$1 each.

★**MME. EDOUARD HERRIOT. Pernet.** The Daily Mail Rose. This vivid Rose, before any other kind, gets and grips the gaze of visitors as they enter our Rose-Garden. The large buds glow like dusky fire, and the newly opened blooms like red-hot copper which soon changes to a pleasing orange-pink. Its fairly large, semi-double flowers are well formed in the early stage, and open quickly in hot weather. Winner of N. R. S. and Bagatelle Gold Medals also \$5,000 prize offered by the *Daily Mail* newspaper of London. \$1 each.

★**MME. LEON PAIN.** A most dependable Rose. Buds are carmine, and the open flower is light silvery pink with salmon tints, carmine on the outer petals. In cool weather it is suffused with an orange tint. Fragrant, well-formed, even in the open state, and freely produced. \$1 each.

★**MME. SEGOND WEBER.** Very beautiful in its bright salmon-pink flowers of almost perfect form, double, and fragrant. N. R. S. Gold Medal. \$1 each.

★**MARIE ADELAIDE, GRAND DUCHESS OF LUXEMBOURG. Pernet.** A Rose of rich orange-yellow, delicately perfumed, and fine for cutting. Does especially well in the South. Order by first two names only. \$1 each



Los Angeles. A perfectly formed enchanting Rose

★**MISS C. E. VAN ROSSEM.** New. A continuous blooming, medium-sized bedding Rose, low and spreading in growth. Color is brilliant, glowing, lasting velvety red. Faint fragrance. \$2 each.

★**MISS CYNTHIA FORDE.** A most delightful, sweetly perfumed Rose, bright rose-pink in color. Its chief charm is the perfect formation of the large, full flowers. N. R. S. Certificate of Merit. \$1 each.

**PRICES (UNLESS OTHERWISE NOTED),** ★2-YEAR, FIELD-GROWN, STAR SIZE ROSES, \$1 each, 10 for \$9, 100 for \$80. Delivery not prepaid.

# Everblooming Hybrid Tea Roses See prices at foot of page

You will appreciate our Durable Celluloid Star Tags when your Roses are in bloom



LADY  
URSULA

★**MISS LOLITA ARMOUR.** Pernet. Sensational in its coloring of orange and copper, yellow and fawn, this Rose deservedly won the coveted Bagatelle prize in 1921. Visitors in our Rose-fields are invariably enthusiastic about the form and color of this delightfully fragrant variety. \$1 each.

★**MRS. AARON WARD.** In cool seasons, and on first opening, it is rich, golden fawn, but in bright sunlight it quickly changes to soft pink and white. Flowers are fully double, and quite fragrant. \$1 each.

★**MRS. AMBROSE RICARDO.** Pernet. The color is enchantingly lovely—a light orange-yellow and silvery pink. The blooms, when open, are cup-shaped and *very* large. \$1 each.

★**MRS. GEORGE SHAWYER.** Rose-pink blooms of large size and excellent shape, both as bud and open flower. It is good for cutting; N. R. S. Certificate of Merit. \$1 each.

★**MRS. HENRY MORSE.** New. A sweetly scented, large-flowered Rose with pointed buds. Color is striking because the light pink on the inside of each petal is in lovely contrast to the deep pink on the outside of petals. \$2 each.

★**MRS. WAKEFIELD CHRISTIE-MILLER.** An immense bright-rose and pearly-pink flower. An exceptionally liberal bloomer, and very hardy. N. R. S. Certificate of Merit. \$1 each.

★**MRS. WM. C. EGAN.** A large flower of ideal form, delicately shaded with two light tones of pink, and touched with yellow at the base. \$1 each.

★**PADRE.** Intense orange-red color. In our Rose-fields it attracted immediate attention on account of its brilliancy. \$1.50 each.

★**RADIANCE.** The most popular pink Rose in America. The fragrant flowers are large, globular but not compact, brilliant rose-pink, with lighter tints on the inner surface of the petals. This Rose has for three years topped our list of sales. \$1 each.

★**RED RADIANCE.** Its big, bouncing blooms of cerise-red endear this Rose to all lovers of the Queen of Flowers. The fragrance is sweet, and fairly strong. Growth is exceptionally fine, equaling, in our experience, the famous Radiance. \$1 each.

★**RED COLUMBIA.** New. Rich velvety crimson, heavily perfumed, and unsurpassed as a red, fragrant boutonniere Rose. \$1.50 each.

A bed of Mme. Caroline Testout Roses with another grand bedding Rose, Lady Ursula, shown above. See descriptions on pages 8 and 9

**PRICES** (UNLESS OTHERWISE NOTED), ★2-YEAR, FIELD-GROWN, STAR SIZE ROSES, \$1 each, 10 for \$9, 100 for \$80. Delivery not prepaid.

# Everblooming Hybrid Tea Roses

See prices  
at foot of  
page

25 Everblooming Hybrid Tea Roses to Plant this Fall \$20

Every plant labeled with our celluloid ★ Star tag and guaranteed to grow and bloom next June

## SHADES OF RED

- |                       |                   |
|-----------------------|-------------------|
| ★Etoile de France     | ★Gruss an Teplitz |
| ★Francis Scott Key    | ★H. V. Machin     |
| ★Gen.-Sup. A. Janssen | ★Red Columbia     |
| ★George C. Waud       | ★Red Radiance     |

## SHADES OF PINK

- |                     |                     |
|---------------------|---------------------|
| ★Columbia           | ★Mme. C. Testout    |
| ★Lady Alice Stanley | ★Miss Cynthia Forde |
| ★Lady Ashtown       | ★Mrs. W. C.-Miller  |
| ★Lady Ursula        | ★Radiance           |

## SHADES OF YELLOW

- |                           |                            |
|---------------------------|----------------------------|
| ★Duchess of Wellington    | ★Souv. de H. A. Verschuren |
| ★Mrs. Aaron Ward          |                            |
| ★Souv. de Claudius Pernet |                            |

## SHADES OF APRICOT

- |       |                     |
|-------|---------------------|
| Betty | ★Miss Lolita Armour |
|-------|---------------------|

## WHITE AND LIGHT SHADES

- |                     |                            |
|---------------------|----------------------------|
| ★Edel               | ★Kaiserin Auguste Viktoria |
| ★Florence Pemberton |                            |

➤OFFER➤ 11. 25 above selected Hardy Hybrid Tea Roses \$20

★**REV. F. PAGE-ROBERTS.** New. A marvelous yellow Rose of fine form. The long shaped buds are deeply stained with tawny orange, but the open flower is deep yellow and unfading. Very fragrant. One of the most charming and lasting flowers when cut in bud form. N. R. S. Gold Medal. \$2.50 each.

★**ROSE MARIE.** A big, splendid American Rose in all phases; the buds are long, smooth, and delicately curved; the open flowers exquisitely pointed and clear rose-pink, unmixed with other shades. Fine for cutting, being borne on long stems which are not always erect. It blooms with remarkable freedom and opens its flowers well. \$1 each.

★**SENATEUR MASCURAUD.** Pernet. Very free flowering, with lovely, long-pointed canary-yellow buds, opening to flowers of creamy yellow. The color is retained well in hot weather. Medium grower. \$1 each.

★**SENSATION.** Large, double, fragrant flowers of fine form, scarlet-crimson with blackish shades, similar to Hoosier Beauty. It has created a sensation already although the color will "blue" in the open garden. A fine cut-flower. A. R. S. Gold Medal. \$1.50 each.

★**SOUVENIR DE CLAUDIUS PERNET.** Pernet. The Actually Yellow Rose. Both bud and bloom are clear sunflower-yellow, unstained by any other color, and are attractively formed. As the flower ages, the outside petals become light sulphur-yellow. This Rose performs best in hot, dry, bright weather. It is not suitable for localities where the summers are wet and cold. Flowers often appear in clusters and occasional blooms, especially the center one, will show an unsightly center, so it is best to cut them when in bud form. A vase full of these glorious yellow blooms is like a bouquet of captured sunshine, so get several plants to insure having plenty of flowers to cut. See illustration. \$1.50 each; 5 for \$7.

★**SOUVENIR DE GEORGE BECKWITH.** Pernet. A gaily colored fragrant Rose of recent introduction, combining salmon-pink and yellow shades similar to the Lyon Rose. Flowers are large, globular, and quite lasting. \$1.50 each.

★**SOUVENIR DE GEORGES PERNET.** Pernet. See this in natural color on front page. Description on page 3.

★**SOUV. DE H. A. VERSCHUREN.** Recently introduced. A two-toned yellow Rose with extra-large flowers following perfect, long pointed buds. It is deliciously fragrant and extra fine as a cut-flower. In cool fall weather this Rose is perfection. \$1 each.

★**WILLIAM F. DREER.** Pernet. A many-colored Rose of tawny yellow, intermingled with pink and salmon in delightful opalescent shades. It is sweetly scented and of fine form. N. R. S. Gold Medal. \$1 each.

OFFER No. 11a.  
The 12 above Roses  
marked ★ for  
\$10.50.



★  
Souv. de Claudius Pernet  
Sunflower-yellow

PRICES (UNLESS OTHERWISE NOTED), ★2-YEAR, FIELD-GROWN, STAR SIZE ROSES, \$1 each, 10 for \$9, 100 for \$80. Delivery not prepaid.

# Hardy Hybrid Perpetual Roses

PERFECTLY HARDY—NEED NO WINTER PROTECTION. SEE PRICES AT FOOT OF PAGE

Hybrid Perpetual Roses are very strong in growth and will grow from 4 to 6 feet in height. They should be pruned back every spring to about 1½ to 2 feet high to make them produce more and better blooms. They bloom profusely in June. If the *bloom stems* are pruned again, back to about three eyes, after

June bloom is over, some varieties will make another showing of Roses in the fall. The immense blooms, rich fragrance, and perfect hardiness of the plants endear to us these delightful June-blooming Hybrid Perpetuals. They are especially satisfactory for northern planting, because they are so hardy.

★**ANNA DE DIESBACH** (Glory of Paris). One of the old varieties, introduced in 1858. Color is a beautiful shade of carmine-pink; flowers are extra large, full and very sweet. Makes a vigorous growth and the immense blooms often show double centers. \$1 each.

★**FRAU KARL DRUSCHKI**. (See illustration.) Universally acclaimed as the best white Rose in existence. It is pure snow-white. Its buds are unusually long for its class and are often shaded pink, but they open into immense and perfectly double flowers often more than 4 inches across, and with waxy petals that are very durable, but, unfortunately, scentless. It has the admirable habit of blooming almost continually. \$1 each.

★**GENERAL JACQUEMINOT**. Standard of color for years, the clear velvety red blooms are just as bright today as seventy years ago. The plant is very hardy, but needs quite careful attention in thinning and pruning if the best-formed flowers are wanted. You should have at least one "General Jack" in your Rose-garden to make it complete. \$1 each.

This is Frau Karl Druschki the snow-white, freeblooming hardy rose



★**GLOIRE DE CHEDANE-GUINOISSEAU**. The blooms are of large size, dark velvety crimson in color, with deep claret reflexes and delightfully fragrant. It is vigorous in growth, perfect in form, and holds its color better than most reds. \$1 each.

★**J. B. CLARK**. A very vigorous grower with strong upright canes. Flowers rosy scarlet-crimson until they fade; foliage bronzy green in the young stage. Makes magnificent, large, perfect blooms. \$1 each.

★**MAGNA CHARTA**. Extra-large, full flowers of unusual depth and substance; bright rosy pink; very profuse bloomer on long, stiff stems. Blooms are large, and very sweet-scented. \$1 each.

★**MRS. JOHN LAING**. Produces a succession of flowers all summer, until late in the fall, on erect plants, of strong growth. It is very hardy and its medium-sized flowers of cup-like form are very sweet. It is a lively shade of solid pink, and so distinct in form that it can never be mistaken. \$1 each.

★**PAUL NEYRON**. Color is clear pink. Flowers are immense, often 5 to 6 inches across, and sweetly perfumed. This is said to be the largest Rose in cultivation and magnificent in every way. \$1 each.

★**PRINCE CAMILLE DE ROHAN**. A Rose much superior to "Black Prince." The color is very dark, velvety crimson, almost black; considered the best very dark perfectly hardy Rose ever produced. \$1 each.

★**ULRICH BRUNNER**. A healthy-growing bush of moderate size, buried in June beneath thumping big blooms of bright cherry-red. It is one of the most extravagantly blooming Roses, and a plant in the height of the season is a thing of unequalled splendor. One of the finest of the Hybrid Perpetuals for cutting, as its flowers are not too compact to open well in the house and are intensely fragrant. \$1 each.

➤**OFFER**➤ 12 One each of the 10 oak-hardy Hybrid Perpetuals on this page for \$9.

**PRICES** (UNLESS OTHERWISE NOTED), ★2-YEAR, FIELD-GROWN, STAR SIZE ROSES, \$1 each, 10 for \$9, 100 for \$80. Delivery not prepaid.

# Rugged Rugosa Roses

\$1 each, 10 for \$9, 25 for \$20. Delivery not prepaid



The great Tea Rugosa. Produces bushels of bloom in June

Rugosa Roses and their hybrids seem just suited for our North American climates, as they are so tough and *hardy*. They make dense, sturdy, compact bushes, 4 to 9 feet high, according to variety. Their dark, rich, leathery foliage is oddly wrinkled, and quite free from insect pests or disease. Some bloom all summer, others but once, but are followed in the autumn with a profusion of beautiful orange-red or crimson fruits. The plants are hardy as oaks and do well in the most trying places. On account of the shapeliness of their growth, they are especially valuable for use as lawn specimens. Being well branched and very symmetrical, they make splendid hedges.

- ★**AGNES EMILY CARMAN.** The most brilliant red Hybrid Rugosa—as red as General Jacqueminct. Flowers are large, cupped and delightfully fragrant. Recurrent in bloom. \$1 each.
- ★**BLANC DOUBLE DE COUBERT.** A magnificent double, pure white Hybrid Rugosa which blooms throughout summer and fall. Very fragrant. \$1 ea.
- ★**CONRAD F. MEYER.** (The Great Tea Rugosa.) Splendid, large, elegantly formed buds and flowers, 3½ to 4 inches across and perfectly double. Color is clear silvery rose; very attractive; intensely fragrant; hardy and a very vigorous grower. The foliage is not as leathery and shiny as that of other Rugosas. (See cut.) \$1 each.
- ★**F. J. GROOTENDORST.** On account of its hardiness, habit of growth, and continuous bloom, this Rose is one of the best for hedges. It grows upright, 4 to 5 feet high, and needs no support. The blooms come in clusters, each red flower having the petals evenly notched, giving the clusters the appearance of bunches of carnations. It makes fine specimen plants. \$1 each.
- ★**RUGOSA ALBA.** Large, sweet-scented, single flowers that are followed by large, bright red berries. \$1 each.
- ★**RUGOSA RUBRA.** The original species from Japan. Flowers beautiful, bright, rosy crimson and single, succeeded by large seed hips of rich, rosy red. \$1 each.

★**ROSA RUGOSA MAGNIFICA.** Introduced by The Conard & Jones Co. The color is brilliant carmine which in the buds is very deep. The flowers are large, often 4 to 5 inches across and are noted for their intense, pungent fragrance. \$1 each.

★**SIR THOMAS LIPTON.** Early and constant in bloom. Makes an upright bush 5 to 6 feet high, and as great in diameter. Flowers snow-white with a greenish tint, and they come at intervals all summer. \$1 each.

## Oak-Hardy Polyantha (Baby Rambler) Roses

IDEAL FOR EDGING WALKS, BORDERING ROSE-BEDS, CEMETERY PLANTING, ETC.

These Roses are perfectly hardy, bloom constantly, and, as a rule, grow only 15 to 18 inches high. Their hardiness and freedom of bloom make them especially valuable for cemetery planting. Gruss an Aachen is the most satisfactory Rose for this purpose.

- ★**CHATILLON.** Makes really gigantic trusses of very lasting flowers. Color is silvery pink. A flower show in itself for weeks at a time. \$1 each.
- ★**GRUSS AN AACHEN.** Tea-Polyantha. Flowers as large as Tea Roses, fully double to the center. Buds are saffron-yellow and pink, opening to a mixture of light shades overlaid with yellow. Exquisitely lovely all season. \$1 each.
- ★**IDEAL.** Color is vivid, rich, lustrous garnet. A vigorous grower, producing great heads of bloom. \$1 each.
- ★**LA MARNE.** Makes an attractive, continuous-blooming, *low-growing hedge plant for a dividing-line* as the growth is uniform and the bluish green foliage very distinctive. Flowers are salmon-rose at the edges with blush center. \$1 each.
- ★**WHITE BABY RAMBLER.** (See illustration.) Very prolific in bloom. Deliciously fragrant. Ideal for edging. \$1 ea.

★**EBLOUISSANT.** (New.) Dwarf in growth and excellent for edging. Flowers are intense rich velvety crimson and shaped like a cactus dahlia. \$1.50 ea.

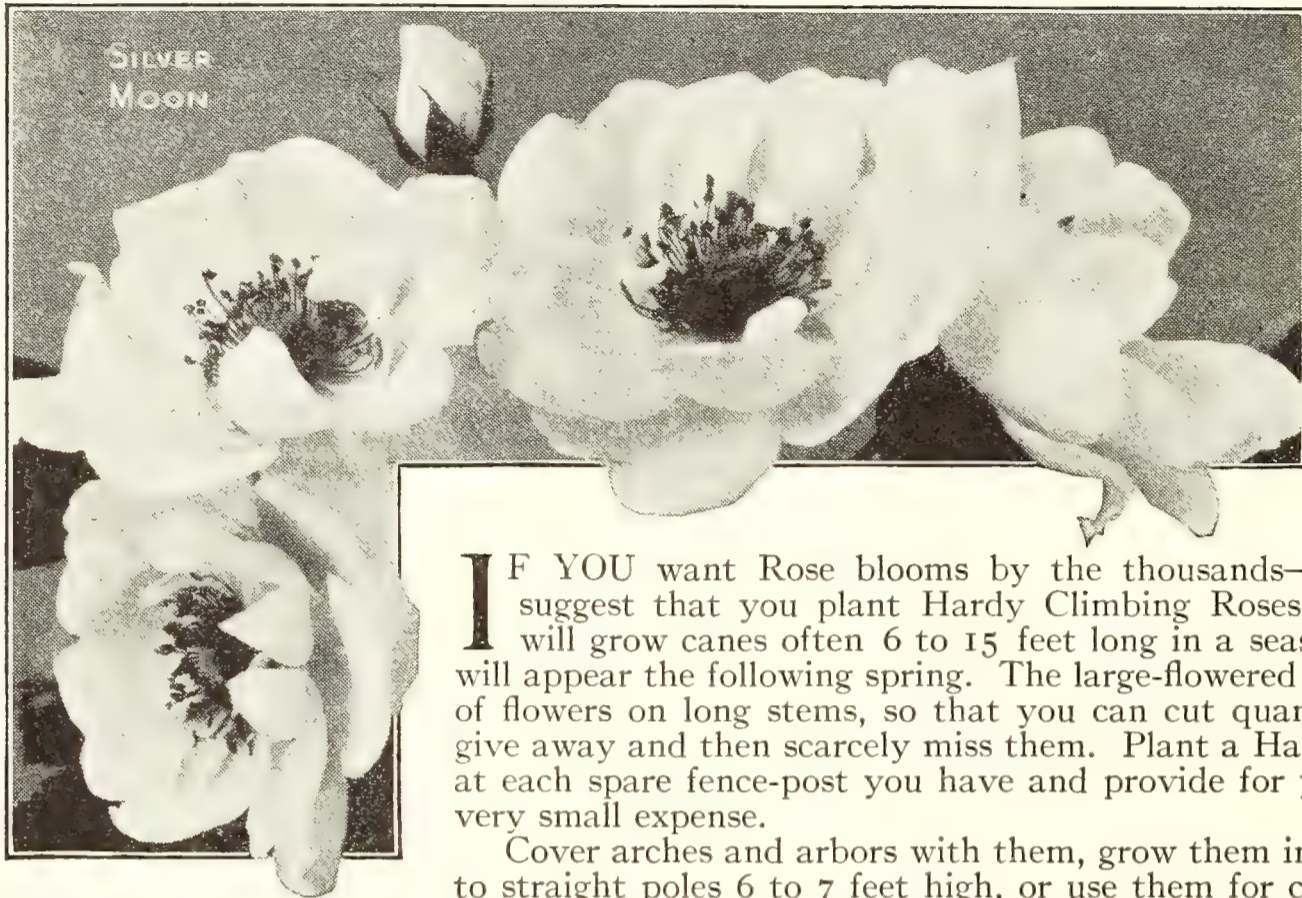


Bed of White Baby Ramblers. Note the perfect mass of bloom

PRICES, Unless otherwise noted, ★ 2-yr. Star size, field-grown plants, \$1 each, 10 for \$9, 25 for \$20. Delivery not prepaid.

# Hardy Climbing Roses

See prices at foot of page



Hardy Climbing Roses are brilliantly beautiful, in shades of red, pink, yellow, and in pure white. For weeks at a time they present a gorgeous display of color that is obtainable from no other hardy climbing vine, and the foliage is lovely after the flowers are gone. You get a thousandfold return for an investment in these Roses.

**I**F YOU want Rose blooms by the thousands—and most people do—we suggest that you plant Hardy Climbing Roses. These vigorous varieties will grow canes often 6 to 15 feet long in a season, on which the blossoms will appear the following spring. The large-flowered kinds will give you bushels of flowers on long stems, so that you can cut quantities to sell, to use, or to give away and then scarcely miss them. Plant a Hardy Climbing Rose this fall at each spare fence-post you have and provide for yourself plenty of Roses at very small expense.

Cover arches and arbors with them, grow them in pillar form by tying them to straight poles 6 to 7 feet high, or use them for covering old stumps. Grow Climbing Roses on your garage and make it a beauty-spot instead of an eyesore.

*The large-flowered kinds are marked L.; the smaller, many-flowered kinds, such as Dorothy Perkins are marked M. Those not marked either L. or M. come midway between these types.*

Order No. 3900

March 23, 1926.

All the roses and other plants which I have got from you at different times have done wonderfully. My *Silver Moon* is a lovely show, and I now have a perfect hedge of it—all from the one bush I bought from you five years ago.—Mrs. T. K. H., Greenville, Texas.

★**ALIDA LOVETT.** (L.) One of Dr. Van Fleet's later productions. Flowers are cup-shaped, large, and quite double; color tender shell-pink. \$1 each.

★**CLIMBING AMERICAN BEAUTY.** (L.) The name describes this Rose, but does not express the extraordinary quality of display given by its rosy crimson, sweet-scented flowers in its first burst of bloom. The canes of one summer will next season cover themselves with great masses of lovely flowers. \$1 each.

★**AMERICAN PILLAR.** (M.) Blooms in mid-June with great clusters of single flowers about 2 inches across, in shadings of carmine and rosy pink to white in the center, where they meet a cluster of long golden yellow stamens. A hedge of this fragrant beauty is a sight you will remember with pleasure, always. \$1 each.

★**AVIATEUR BLERIOT.** Produces charming saffron buds, opening into small, most attractive, double, apricot and lighter Roses of exquisite magnolia fragrance. The foliage is glossy and disease-resistant. \$1 ea.

★**BESS LOVETT.** (L.) (See illustration.) Shapely, double fragrant flowers of clear light crimson, borne on long stems, fine for cutting. It blooms right after Climbing American Beauty. \$1 each.

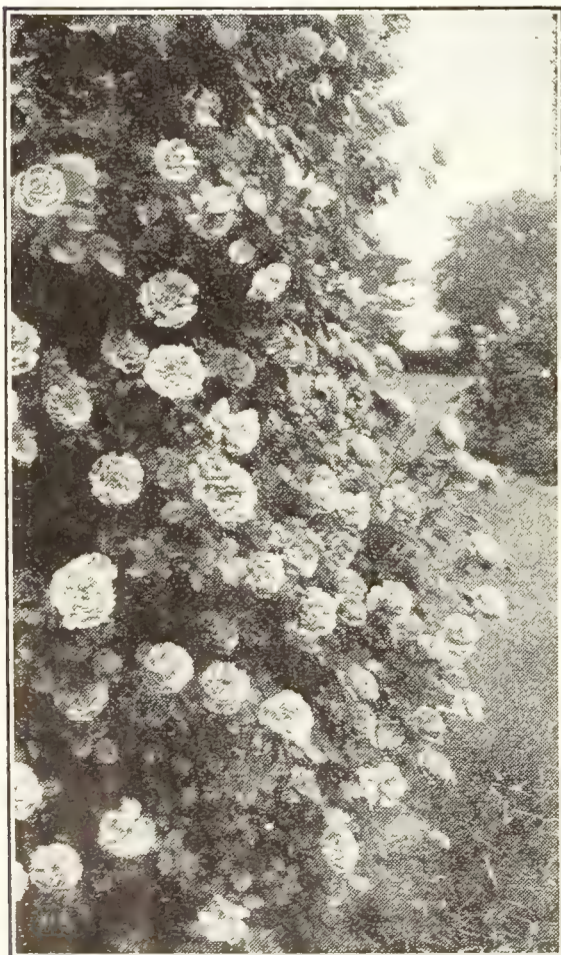
★**BONNIE PRINCE.** (M.) New. A very beautiful snow-white climber which flowers in loose, artistic clusters and is ten days earlier in bloom than White Dorothy. \$1.50 each, 10 for \$12.

★**CHRISTINE WRIGHT.** (L.) A strong climbing Rose with double, bright, clear wild-rose pink flowers, 3 1/2 to 4 in. across, borne singly and in clusters. This Rose often has some blooms in the fall. \$1 each.

★**CORONATION.** (M.) Produces beautiful sprays of quite double, crimson-scarlet flowers, some of the petals of which have a dainty flake of white and are quilled, so that the flower itself is wholly unique. \$1 each.

★**DOROTHY PERKINS.** (M.) An American-grown Rose of wide distribution and great merit because of its vigor, dependability, and the beauty of its perfectly double, clear shell-pink flowers, the petals of which are attractively crinkled. It is subject to mildew in damp situations. \$1 each.

★**DR. HUEY.** Color is an intense dark crimson-scarlet, comparing only with the Hybrid Tea Rose, Chateau de Clos Vougeot. Its fading blooms turn brown in hot sun, before the petals fall. The flowers are medium-sized, semi-double, and so closely spaced on the plant in its June burst of bloom as almost to conceal the excellent foliage. It is superb when grown on a post or pillar. Awarded the much-coveted Hubbard Gold Medal. \$1 each.



Bess Lovett. Lovely for cutting

**PRICES** (UNLESS OTHERWISE NOTED), ★2-YEAR, FIELD-GROWN, STAR SIZE ROSES, \$1 each, 10 for \$9, 100 for \$80. Delivery not prepaid.



Keep Mildew and Black-Spot under control. Dust with



Manufactured for The Conard-Pyle Co.

We use this preparation in our Rose Garden and in our extensive Rose fields, as it is the most efficient control known for fungous diseases on Roses and other plants. It is recommended by Dr. Massey, Cornell University, specialist on Rose diseases, who for years past has made a special study for The American Rose Society of the causes and control of mildew and black-spot on Roses.

STAR ROSE DUST is a combination of the finest ground (300 mesh) sulphur and lead arsenate. It destroys insects and caterpillars which eat the foliage.

Apply in dust form by shaking through a fine cloth or use a Hand Dust-Gun as offered below.

The ideal time for making dust applications is late in the evening when the wind conditions are quiet.

Keep the foliage healthy on your Roses. They will mature better in the Fall and be in stronger condition to withstand the Winter.

Prevention is always better than cure. Get your STAR ROSE DUST now and have it on hand to use when needed.

STAR ROSE DUST, PRICE, 50c. per lb., postpaid

HAND DUST-GUN

Handy to use where a dozen or more plants require treatment. Made in the form of a hand sprayer.

PRICE, \$1.35, postpaid.

FOR APHIS OR GREEN FLY on Roses or any plants, spray with "BLACK LEAF 40," a concentrated nicotine preparation. 1 oz. bottle, to make 24 quarts of spray. Price, 35 cts., postpaid.

TEAR OFF HERE

THE CONARD-PYLE CO., West Grove, Pa.

Please send to the address below the articles which I have checked for which remittance is enclosed.

- .....lbs. STAR ROSE DUST, 50c. lb.....\$.
.....HAND DUST-GUN, \$1.35 each.....\$.
.....BLACK LEAF 40 (for Aphis), 35c. oz.....\$.

NAME.....

ADDRESS.....

Please PRINT or write your name and address very plainly.

(OVER)

SUCCESSFUL GARDENERS USE  
AND ARE DELIGHTED WITH

# STIM-U-PLANT

PLANT STIMULANT TABLETS

## *The Ideal Feeding Method for all Plants*

Everything you grow depends on fertilization. All growing plants must be fed if you expect them to produce results, and they respond in a remarkable way to *proper* feeding.

Feed your plants as you feed yourself. Do not give them breakfast, dinner and supper at one time, for an overfed plant gets indigestion and is harder to get back to healthy growing condition again than one that has been underfed.

You place these tablets at the roots, where they dissolve and produce chlorophyl, etc., which mean the same to a plant as blood to a human being.

This plant food pays for itself many times over in a season.

STIM-U-PLANT is an evenly proportioned fertilizer and has guaranteed analysis of 11% nitrogen, 12% phosphoric acid, 15% potash and you apply it *where* and *when* needed.

## HANDY TO HAVE—EASY TO USE

Simply insert tablets in soil near plants, or dissolve in water at the rate of four tablets to the gallon and apply as liquid manure. Directions with every package tell how many and how often to use.

## A PROVED SUCCESS

By using STIM-U-PLANT you save money, because it is not wastefully thrown broadcast, nor does it carry weed seeds into your soil. Scientifically made of pure, essential plant food elements, its ingredients are correctly proportioned to quickly produce satisfying results on all plant life. For house plants during the Winter it is invaluable.

STIM-U-PLANT is a proved success for both indoor and outdoor use. Feed your house Ferns with this handy, clean, odorless plant food and keep them flourishing and beautiful all the time.

Trial size 25c.; 100 tablets, 75c.; 1000 tablets, \$3.50, postpaid.

---

## THE CONARD-PYLE CO., West Grove, Pa.

Please send postpaid to the address below the articles which I have checked for which remittance is enclosed:

.....Pkgs.	30 STIM-U-PLANT TABLETS	@	25c.....
....."	100 STIM-U-PLANT TABLETS	@	75c.....
....."	1000 STIM-U-PLANT TABLETS	@	\$3.50.....

NAME.....

ADDRESS.....

Please PRINT or write your name and address very plainly

(OVER)

# Hardy Climbing Roses

Prices at foot of page

★**DR. W. VAN FLEET.** (L.) Open flowers are 4 inches and over in diameter. The color is a remarkable, delicate shade of flesh-pink on the outer surface, deepening to rosy flesh in the center. Flowers full and double, delicately perfumed; buds pointed; stems 12 to 18 inches long, fine for cutting. From one plant hundreds of Roses can be cut for your friends, for selling, or for indoor decoration. \$1 each.

★**EMILY GRAY.** A new yellow climbing Rose that is truly yellow. The medium-sized flowers are borne in clusters of ten or more. It needs winter protection. \$1.50 each, 10 for \$12.

★**EXCELSA.** (M.) The color is an intense, *clear carmine-lake*. Flowers are perfectly double. Plant with pink and white Dorothy Perkins. \$1 each.

★**EVANGELINE.** (M.) Flowers are single and white with an enchanting flush of pink on the edges of the petals. This is one of the daintiest of the hardy climbing Roses. \$1 each.

★**GARDENIA.** Produces in early June a mass of pleasing long-shaped yellow buds opening to creamy white. This Rose is the most dependable of climbers with a yellow tendency. \$1 each.

★**HEART OF GOLD.** (M.) Single, *dark crimson* flowers which do not last in hot sunshine. The Rose derives its name from the rich golden anthers that decorate the center of each flower. \$1 each.

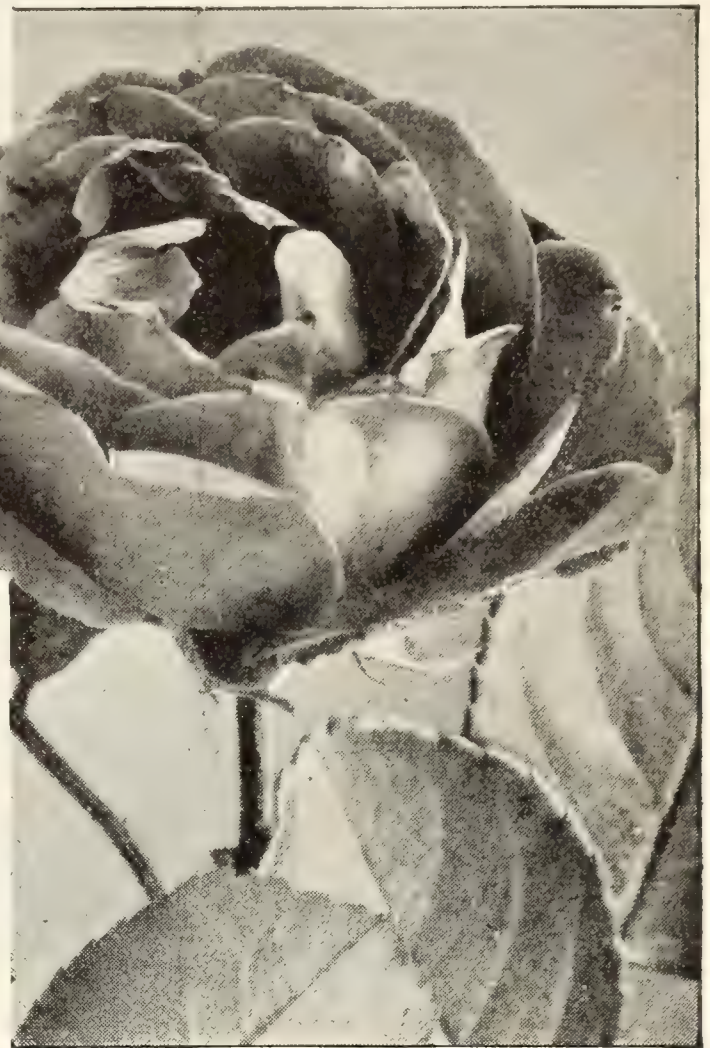
★**MARY WALLACE.** (L.) New. Lovely long buds of a shade of warm pink peculiar to itself, and very attractive, great open flowers. The rich green leafage resists bugs and bothers, and is the forerunner of a new type. \$1.50 each, 10 for \$12.50.

★**PAUL'S SCARLET CLIMBER.** (L.) (See illustration.) Scarlet—definite, actual, and vivid. Nothing so pure and bright in color has ever before been known in a climbing Rose. It is now a standard for brilliancy in Roses. Use it as a pillar or a bush. Winner of the Cory Cup, and also the Gold Medal, National Rose Society. \$1 each.

★**PROF. C. S. SARGENT.** A pillar Rose, giving delicate buff, fragrant flowers of medium size and distinctly dainty. \$1 each.

★**ROSERIE.** (M.) Just the same as the notable Tausendschön, but its color is uniform bright pink. Thornless and fine for arches and arbors. \$1 each.

★**SILVER MOON.** (L.) (See illustration, page 14.) The grandest white climbing Rose. Flowers are very large, semi-double, and when open resemble a white clematis with a center of golden anthers. A most vigorous grower with large, dark green, shiny foliage. \$1 each.



Paul's Scarlet Climber. The most vivid Scarlet Climbing Rose in existence

★**STAR OF PERSIA.** (L.) New. A marvelously vivid buttercup-yellow Rose that grows 8 to 10 feet high. *The color does not fade.* \$1.50 each.

★**TAUSENDSCHÖN.** (M.) "Thousand Beauties" is the translation of this German name. The round, cup-shaped, double blossoms, borne in clusters, vary on the plant from white to deep pink at the same time. \$1 each.

★**WHITE DOROTHY.** (M.) Just like Dorothy Perkins, save that it is pure white, wherefore it goes well with that variety and with Excelsa. \$1 each.

★**ZEPHIRINE DROUHIN.** (L.) Climbing Bourbon. A rare old Rose of beautiful form, bright silvery pink, and very fragrant. It is thornless. \$1 each.

## Three Roses to Beautify Retaining Walls and Embankments

These Roses grow horizontally and the branches root where they touch soil. They are charmingly decorative and effective on walls and embankments.

★**MAX GRAF.** Large, rosy pink, single flowers, like crimped silk. We have second-size, field-grown plants only. 50 cts. each, 10 for \$4.50.

★**MRS. M. H. WALSH.** Flowers are double and pure snow-white. \$1 each, 10 for \$7.50.

★**WICHURAIANA.** Its greatest use is for retaining embankments from washing. Flower is single, glistening white, with brilliant golden anthers. \$1 each, 10 for \$6.50, 100 for \$60.

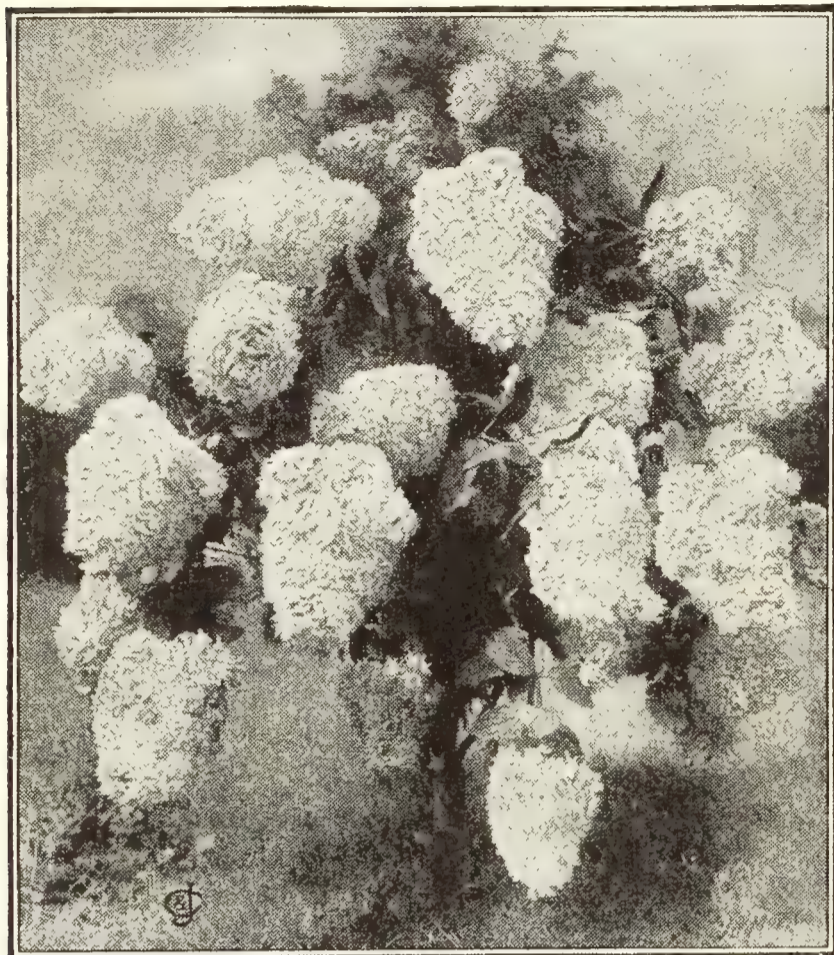


There's a wildwood charm in Climbing Roses loosely growing over a retaining wall

**PRICES** (UNLESS OTHERWISE NOTED), ★2-YEAR, FIELD-GROWN, STAR SIZE ROSES, \$1 each, 10 for \$9, 100 for \$80. Delivery not prepaid.

# Hardy Ornamental Flowering Shrubs

SEE PRICES AT FOOT OF THE PAGE



*Hydrangea paniculata grandiflora*. Blooms for 3 months

## Two Forsythias (Golden Bells)

**Forsythia spectabilis.** This shrub has seemed to us, after several years' trial, as the most desirable of the Forsythias. The habit is compact and every branch is closely covered with yellow flowers before the foliage appears. Price, 1-yr. size, 50 cts., postpaid; 2-yr. size, \$1; 3-yr. size, \$1.50 □

**F. viridissima.** The earliest blooming shrub. The vivid yellow flowers tell you that spring has come.

## Honeysuckle, Bush (*Lonicera Morrowii*)

Yellow flowers in May, are followed by masses of brilliant scarlet berries which remain on the bush a long time. The bush grows 8 to 10 feet high and about the same in diameter, with long, pendulous, berry covered branches. Useful for filling in corners or screening unsightly places.

## *Hydrangea paniculata grandiflora*

Considered by many to be *the grandest hardy flowering shrub* that grows. The immense bloomheads, often 12 inches long, are borne in great conical clusters from July till frost. If left untrimmed, this shrub will grow 10 feet high, but it can be kept pruned to any height without injury to the plant. See illustration above.

## Philadelphus (Mock Orange) See cut

**P., Virginal.** Beautiful, large, crested flowers. The grandest of all Philadelphus. An amazing advance on the old-time varieties, all of which bloom bountifully, but the richly fragrant flowers of Virginal, almost 3 inches across, surpass them all and continue blooming during the summer. Price, 1-yr. size, 50 cts. each, postpaid; 2-yr. size, \$1 each; 3-yr. size, \$1.50 □

**P., Bouquet Blanc.** A new variety. Large white flowers, produced in great quantities.

**P., Avalanche.** *New and particularly fine.* Large white flowers on slender arching branches.

## 3 Double Altheas (Rose of Sharon)

Upright-growing shrubs that bloom profusely during July and August. Grow 6 to 8 feet. Splendid to use for tall, upright flowering hedges as the plants are quite hardy and require no special care.

**Banner.** Perfect flowers; pink and red. 2-yr. only.

**Jeanne d'Arc.** Snow-white, double flowers. 2-yr. only.

**Pink.** Very deep dark pink flowers. 2-yr. only.

## Beauty Fruit (*Callicarpa purpurea*)

Grows about 3 feet high. Branches are covered in August with tiny pink-tinted flowers, followed with brilliant violet-purple berries. A beautiful shrub.

## *Calycanthus floridus* Sweet-scented Shrub

Valued for its spicy, fragrant, dark crimson flowers which come in June and are very lasting.

## 6 Dainty Showy Deutzias

**Deutzia crenata magnifica.** (New.) Makes great, fluffy bunches of glistening white flowers on long, graceful branches. 1-yr. size, 50c., postpaid; 2-yr. size, \$1; 3-yr. size, \$1.50, delivery not prepaid.

**D. gracilis.** 2½ to 3 feet. Completely covered in May with pure white, bell-shaped flowers.

**D. gracilis rosea.** Flowers are a beautiful pink.

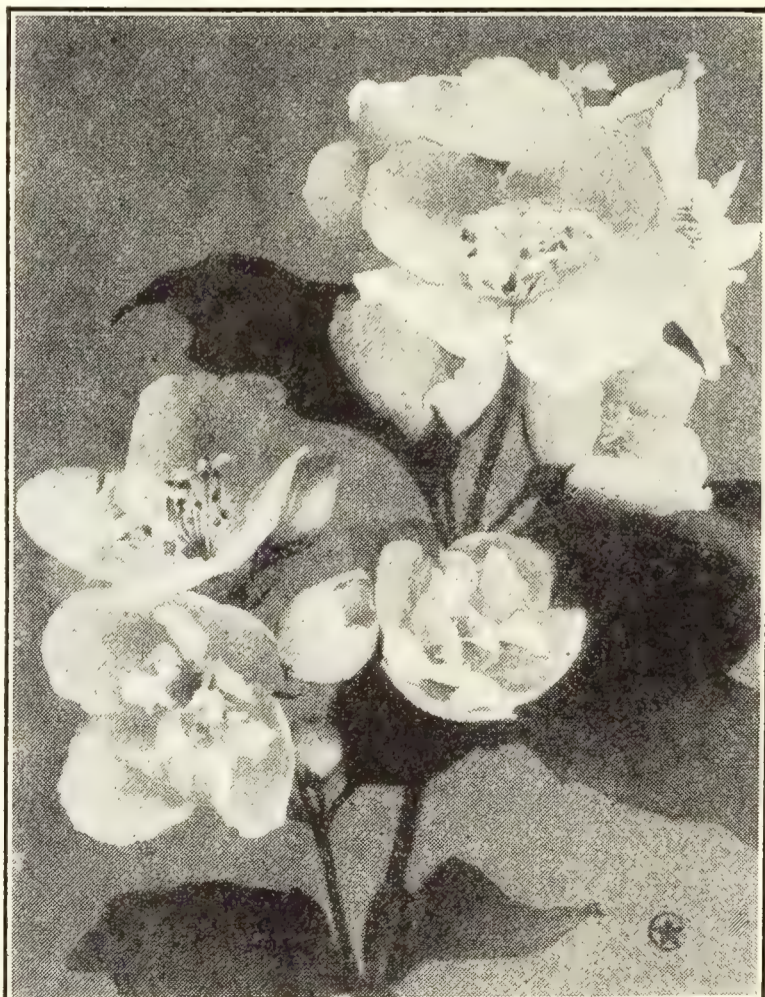
**D. Lemoinei.** A splendid dwarf shrub. Flowers come in cone-shaped heads of purest white.

**D. crenata rosea.** Grows 4 to 6 feet. Flowers pink.

**D. crenata, Pride of Rochester.** 4 to 6 feet. Beautiful double, pure white flowers, tinged with blush.

## Evergreen Bush Euonymus

A handsome erect-growing shrub with lustrous dark green foliage that shines as if varnished. Makes a beautiful lawn decoration.



**New Philadelphus Virginal**

**Prices of Shrubbery,** *except where noted,* 1-year size, 35 cts. each, 10 for \$3, postpaid; 2-yr. size, 60 cts. each, 10 for \$5; extra-heavy, 3-yr. size, 90 cts. each, 10 for \$7.50. Delivery not prepaid.

HARDY ORNAMENTAL SHRUBS, continued (See prices below)

*Hydrangea arborescens grandiflora*

("Hills of Snow," or Snowball Hydrangea.) See cut

Blooms five weeks earlier than *H. paniculata grandiflora*. Produces exquisite, lasting, snow-white flowers during June and July when few other shrubs are in bloom. A shrub you will be proud to own.

Lilac, Persian Red

The most universally popular flowering shrub. Reddish purple flowers in open clusters. Very free blooming. Prices at foot of page.

Snowberry (*Symphoricarpos racemosus*)

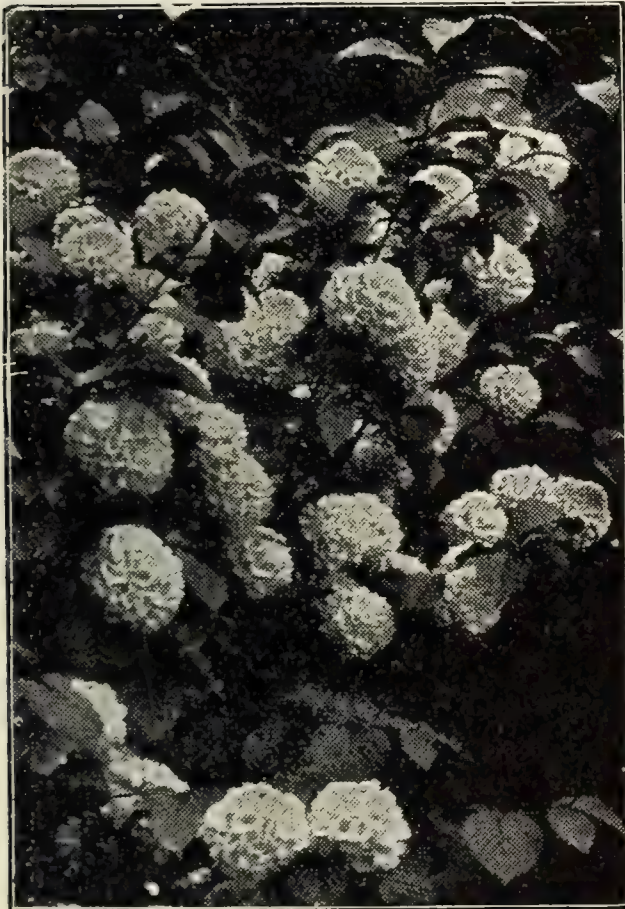
A small, native shrub that succeeds in shaded locations. It is quite hardy, produces small white or pinkish flowers in July and August, and these are succeeded by white berries that last well into the winter.

Japan Snowball (*Viburnum plicatum*)

Flowers are pure white and come in dense, globular clusters resembling balls of snow, each cluster being 4 to 5 inches in diameter, and they fairly cover the bush. It grows 8 to 10 feet in height with strong, crinkled, dark green leaves. A most attractive shrub when in full bloom in June. It will bloom in partial shade. See illustration below.



*Hydrangea arborescens* (Hills of Snow)



*Viburnum plicatum* (Japan Snowball)

Three Choicest Spireas

**Spiraea Van Houttei.** Blooms in May and June. One of the most beautiful of all Spireas. Profuse bloomer; pure snow-white flowers borne in elegant, plume-shaped clusters.

**Red Spirea, Anthony Waterer, Perpetual-blooming.** Makes nice, shapely bushes 2 to 3 feet high; begins to bear its large flat clusters of rich rosy red flowers almost as soon as planted, and continues blooming all summer and fall.

**Spiraea prunifolia (Bridal Wreath).** Makes a profusion of dainty, double white flowers like little rosettes. A most popular shrub.

DO YOU WANT "A SUCCESSION OF BLOOM"?

Plant the following 12 shrubs; they will give you bloom from spring to frost. All are hardy.

- 1 Forsythia (April)
- 2 Spireas (May)
- 1 Philadelphus (May)
- 2 Deutzias (June)
- 1 Snowball (June)
- 2 Weigela (June)
- 1 Snowball Hydrangea (July)
- 1 Beauty Fruit (August)
- 1 Hydrangea (September)

**OFFER 17.** The above 12 Hardy Shrubs, \$3, postpaid; or 2-yr. size, the 12 for \$5 □



*Weigela candida*

Free-Flowering Weigela

**Eva Rathke.** Red. Considered the handsomest of all the Weigelas. The flowers are crimson, with creamy markings, and are borne in great quantities. This variety blooms all summer and is, without question, the choicest shrub in this class. It is low-growing and spreading in habit, therefore it should be planted alone or in clumps or else on the outside of shrubbery borders.

**Candida (White Weigela).** A strong, erect-growing bush with heavy foliage. The snow-white, bell-shaped flowers come in great profusion along the branches, as shown in the illustration, and the bush is in bloom all summer.

**Rosea.** The lovely rose-pink flowers come in such profusion that they almost hide the foliage. One of the finest shrubs.

**Prices of Shrubbery,** except where noted, 1-yr. size, 35 cts. each, 10 for \$3, postpaid; 2-yr. size, 60 cts. each, 10 for \$5; extra-heavy, 3-yr. size, 90 cts. each, 10 for \$7.50 □

# Hardy Hedge and Edging Plants

Beautiful hedges add much to the appearance of a property, and are everywhere coming into more general use. They look better than fences, last longer, and cost less. When once established, they require only a little cultivation and pruning each year to keep them the desired shape and size. A fence rots and causes trouble; a hedge grows better looking every year and it *immediately* adds value to your home. Try it.

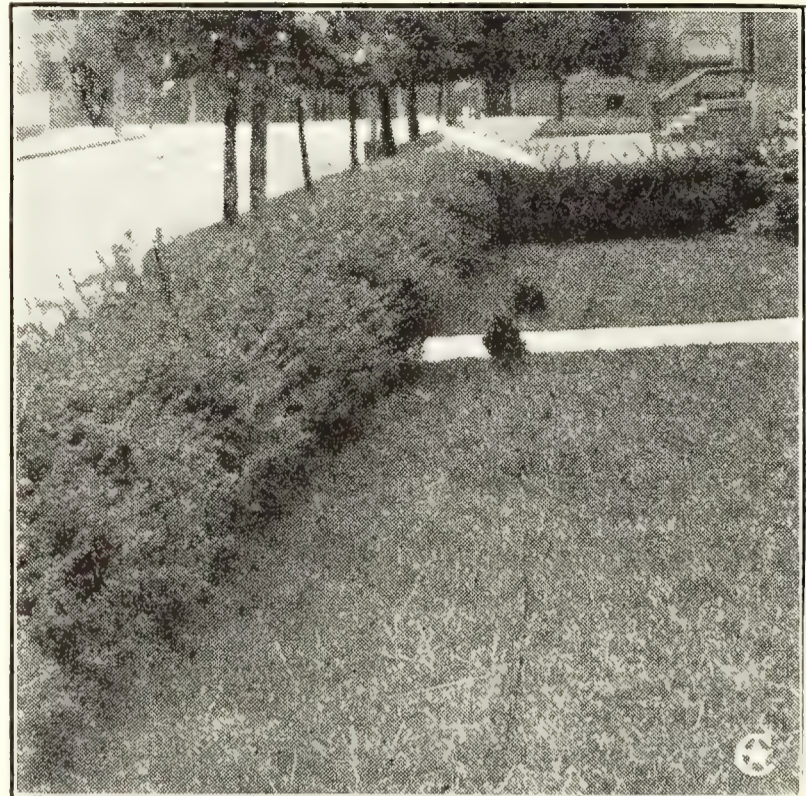
## Japan Barberry (Berberis Thunbergii)

HARDY EVERYWHERE (See cut)

Japan Barberry is the ideal shrub and hedge plant, gracefully beautiful in summer, with its arching thorny branches thickly covered with small, fine, rich green leaves, which change in the autumn to a unique fiery crimson. Brilliant scarlet berries make the hedge attractive after the leaves have fallen.

Barberry makes a lovely hedge when allowed to grow without trimming, but it can be trimmed without injury at any season and kept in formal shape.

Do not confuse this with the Common Barberry (*Berberis vulgaris*). The latter is a host-plant for wheat-rust and therefore has been ordered destroyed by the Federal Government. But the *Japan Barberry* is *absolutely safe* for yourself and for the wheat crop. It is *recommended* by Uncle Sam and is the best hedge plant we know, and hardy everywhere.



Japan Barberry makes a chicken-proof hedge

PRICES, delivery not prepaid	10	100	1,000
9 to 12 inches, field plants.....	\$2 50	\$20 00	\$180 00
12 to 18 inches, field plants.....	3 50	30 00	250 00
18 to 24 inches, field plants.....	4 50	40 00	325 00

## Evergreen Box Edging (*Buxus sempervirens*)

The old-fashioned evergreen dwarf edging plant. Grows only about 15 inches high. There are some gardens in this country where the pathways are edged with Box plants (like these) over 100 years old. This evergreen Box Edging was used for bordering the Rose-garden of George Washington at Mt. Vernon and is still fine. Without question the most beautiful formal edging plant known. In the temperate zone you will find gardens with all the walks neatly edged with it. The foliage is firm, fleshy and dark green in color. You can trim at any time and after a rain the refreshing fragrance from a planting of Boxwood is an added charm. *Our plants are bushy, symmetrical*, and have an unusually strong root system that insures good growth after transplanting.

Use Evergreen Box for Winter Window Boxes	10 ppd.	100 <input type="checkbox"/>	1,000 <input type="checkbox"/>
6-in. well-furnished bushy plants, 3 to 4 in. diam.	\$3 00	\$25 00	\$225 00



This is the new Box-Barberry used for edging

This sign indicates delivery at your expense.

## New Box-Barberry

NOVELTY HARDY EDGING PLANT  
PERFECTLY HARDY ANYWHERE  
IN THE UNITED STATES

An exquisite, new, perfectly hardy edging plant. Makes shapely, upright bushes that can be kept 6 inches high by trimming. Our stock is grown from cuttings made from the original plant. Especially valuable in the central and northern states as it is perfectly hardy and does not winter-kill.

This new *dwarf* Barberry comes to fill a long-felt need for an edging plant that is dwarf in growth, free from all diseases and insect pests, and *absolutely hardy* everywhere in the United States. The foliage is small and dainty, in fact as small as the leaves of the universally known evergreen Box Edging, *Buxus sempervirens*. The young leaves are a beautiful emerald-green in the spring, changing to a pleasing, soft green during the summer and dark red in the fall. In many parts of this country, garden-beds had to be bordered annually or not at all, as there was no perfectly hardy edging plant to use, but now no garden need be incomplete on this account. Box-Barberry, as far as we are aware, has never been known to winter-kill, and this insures a neat, unbroken border.

PRICE: Strong, hardy, field-grown plants:

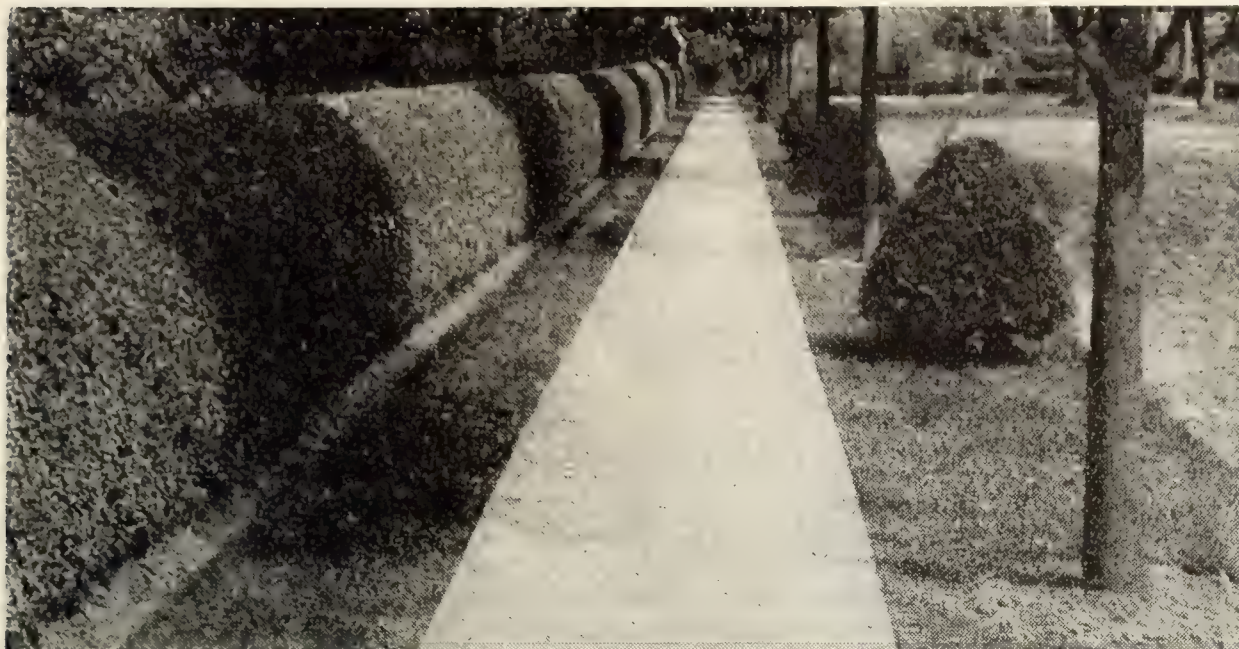
	10	100	1,000
1-yr. size....	\$1 25 ppd.	\$9 00 <input type="checkbox"/>	\$75 00 <input type="checkbox"/>
2-yr. size....	1 50 ppd.	12 00 <input type="checkbox"/>	100 00 <input type="checkbox"/>
3-yr. size....	2 50 ppd.	20 00 <input type="checkbox"/>	175 00 <input type="checkbox"/>
4-yr. size....	4 50 ppd.	35 00 <input type="checkbox"/>	

Extra-size, bushy specimen plants, \$1 each, 10 for \$7.50, delivery not prepaid

TWO MOST POPULAR HEDGE PLANTS

California Privet (*Ligustrum ovalifolium*)

THRIVES IN SUN OR SHADE—AROUND SMOKY FACTORIES—NEAR RAILROADS, ETC.



Hedge of California Privet. Thrives in sun or shade

A remarkably vigorous grower, compact and regular in form, with glossy wax-like foliage; a beautiful shade of green. Thrives in all kinds of soils and situations, in sun or shade, and for seashore planting it is one of the best things you can get.

25 at 100 rate, 250 at 1,000 rate  
By express only, not prepaid

12 to 18-inch plants  
100 for \$6.50, 1,000 for \$55.  
18 to 24-inch plants  
100 for \$8, 1,000 for \$65.  
2 to 3-foot plants  
100 for \$10, 1,000 for \$85.  
Specimen plants, 3 feet high, 12 to 15-inch spread, \$1 each □  
Bushy, low, ball-shape, 12-inch diam., \$1 each. □

Entirely Hardy Privet (New) (*Ligustrum Ibolium ovalifolium*)

The foliage of this new hardy Privet closely resembles that of the ever-popular California Privet. Best of all, however, it is *perfectly hardy* and our northern customers can now enjoy having a hedge of beautiful Privet without fear of having it winter-killed. Price, 1½ to 2-foot, \$10 per 100, \$75 per 1,000; 2 to 3-foot, \$15 per 100, \$135 per 1,000; 3 to 4-foot, \$20 per 100, \$180 per 1,000; by express only, delivery not prepaid.

Hardy Ornamental Evergreens

DESIRABLE PERMANENT PLANTS FOR LAWN DECORATION

By planting Evergreens you can secure a rich, furnished effect on your lawn and around your home, obtainable no other way. Plant some at the corners of your house, to break the sharp angles, and if you plant in front of your porch you can keep the plants any height desired by trimming.

You can pot them for indoor decoration and plant outdoors in a permanent place in the spring.

**Juniperus Pfitzeriana.** Makes a spreading, vase-shaped growth. Foliage light green and feathery. Beautiful as a lawn specimen or planted at the corner of a house. Not suitable for indoors. 12 to 18-inch spread, \$2 each. 18 to 24-inch spread, \$3 each □

**Retinispora filifera** (Thread-branched Japan Cypress). Slender, string-like, bright green foliage drooping in long filaments, most attractive when fully grown. 15 to 18-inch plants, \$2 each □

**Retinispora pisifera aurea.** Broad, flat foliage, deep green, tipped with golden yellow. 12 to 15-inch plants, \$2 each □

**Retinispora plumosa** (Plume-like Japan Cypress). A most desirable evergreen. The foliage is light and feathery in texture. An exceedingly attractive plant. 18 to 24-inch plants, \$2.50 each □

**Taxus cuspidata brevifolia** (Dwarf Japanese Yew). Very ornamental, shiny, dark green foliage. Low and spreading habit and very slow in growth. 12 to 18-inch plants, \$3.50 and \$5 each □

**Thuja aurea elegantissima** (Golden Arborvitæ). Very ornamental, with lace-like golden tipped foliage. 12 to 15-inch plants, \$2 each; 15 to 18-inch, \$3 each; 3-foot, \$5 each □

**Thuja occidentalis** (American Arborvitæ). Soft, green foliage. Grows rapidly; foliage has a fine aromatic odor. 2½-foot plants, \$3 each □

**Thuja pyramidalis** (Arborvitæ). Columnar in form. Foliage light green and growth is dense and compact. Very decorative at the porch steps or corners of your house. 2-foot size, \$2 each; 3-foot, \$3 each; 4-foot, \$5 each □. Potted plants for the porch or for indoors, \$2.50 each □

**Thuja sibirica** (Siberian Arborvitæ). Branches stout and foliage dense. Slow in growth and has rich, dark green foliage. 12-inch plants, \$1.50 each; larger size, 2-foot, bushy, \$3.50 each □

**Thuja Vervæneana.** A handsome variety of occidentalis, of denser habit and shorter branches. Its foliage is gold and green becoming bronzy in winter, making a splendid contrast with other varieties of evergreens. 15 to 18-inch plants, \$2 each □



Evergreens are restful to the eye all year round and add richness and warmth to the appearance of a house

# Hardy Ornamental Vines and Ivies

FOR ARCHES, ARBORS, PORCHES, ETC.

The following 4 Vines and Honeysuckles need supports to climb on.

**Akebia quinata.** A lovely, rapid-growing old-time vine with neat clean foliage and graceful habit of growth. The clusters of violet-brown, cinnamon-scented, cup-shaped flowers are unique and attractive. 2-yr., 50 cts., postpaid.

**Sweet-Scented Japan Clematis** (*Clematis paniculata*, or *Virgin's Bower*). The sweetest of all Clematis and the easiest to grow. Plant in good, mellow soil and *support the plants as soon as they have made even a few inches of growth*. We consider this the most satisfactory, hardy, flowering vine we offer. Flowers small, rich creamy white, borne in clusters, completely covering the vine. Makes beautiful sprays for bouquets. 2-yr., 50 cts. each, postpaid.

## Chinese Matrimony Vine

(*Lycium barbarum*). A strong, hardy, climbing vine. Bright rosy purple flowers, followed by brilliant scarlet berries; makes a dense, thick growth. 1-yr. size, 35c. postpaid; 2-yr. size, 60c. each; 3-yr. size, 75c. □

**Bitter-Sweet** (*Celastrus scandens*). Has attractive foliage and yellow flowers in June, followed by bright orange fruit which usually remains all winter. 1-yr. size, 35c. postpaid; 2-yr. size, 60c. each; 3-yr. size, 75c. □

## Sweet-Scented Honeysuckles

35c. each, postpaid; 2-yr., 50c.; 3-yr., 75c. □

For covering summer-houses and arbors.

**Everblooming Honeysuckle, Heckrottii.** Flowers crimson-carmine with golden apricot center. Blooms unceasingly.

**The Beautiful Halliana Honeysuckle.** *Intensely* sweet-scented; flowers buff-yellow, passing to white.

**Evergreen Sweet-scented Honeysuckle.** Deliciously sweet; flowers buff, yellow, and white.

**Golden-leaved Honeysuckle.** Leaves netted with yellow; flowers yellow. A lovely vine to plant for decorative effect.

## 3 Leading Ivies

Cling to stone, brick, or stucco, and need no other support.

**JAPAN, or BOSTON IVY** (*Ampelopsis Veitchii*). The handsome, deep green foliage changes in autumn to crimson. 1-yr. 25 cts. ea., \$2.50 per doz.; 2-yr. 50 cts. ea., \$5 per doz., postpaid.

**AMERICAN IVY** (*Ampelopsis quinquefolia*). The true Virginia Creeper; hardy and noted for its colored foliage in autumn. 1-yr., 25c. ea., \$2.50 per doz.; 2-yr., 35c. ea., \$3 per doz.; 3-yr., 50c. ea., \$5 per doz., ppd.

**HARDY ENGLISH IVY** (*Hedera helix*). Evergreen, with dark, glossy green leaves. 25 cts. each, \$2.50 per doz.; large size, 50 cts. each, \$4.50 per doz., postpaid.

## Evergreen Euonymus

35 cts. each; 2-yr. size, 60 cts. postpaid

**Euonymus radicans.** An evergreen, hardy vine with small, glossy green leaves. Excellent for covering low walls or rocks.

**Euonymus radicans variegata.** Leaves green and white. Makes a lovely bordering plant.

## 3 Wisterias See cut

Magnificent vines, producing masses of flowers in dense, pendent clusters. Blooms come in May and make an attractive sight. Vigorous growers that will climb to the roof of your house if desired. **Magnifica.** Blue-lavender

**Chinese Blue.** Sky-blue.

**Chinese White.** Creamy white.

Prices, 2-yr. size, 50 cts., 3-yr. size, 75 cts. □



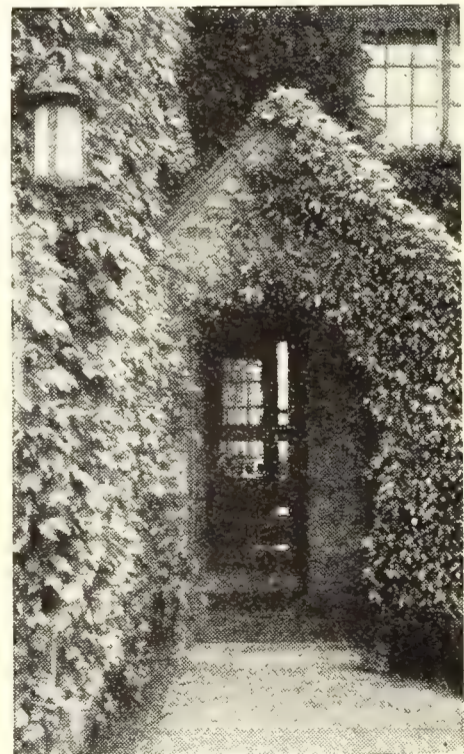
Sweet-Scented Japan Clematis



Everblooming Honeysuckle



Vigorous-Growing Wisteria

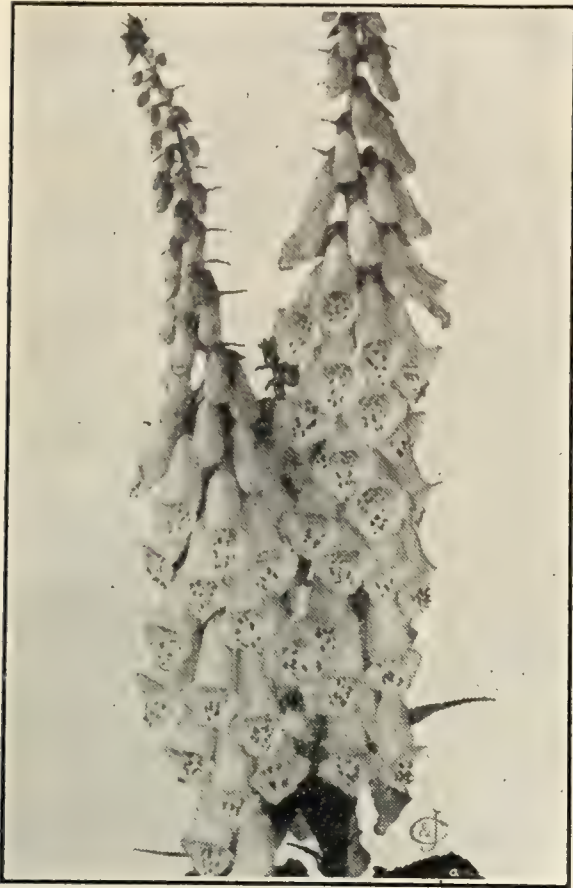


Japan or Boston Ivy (*Ampelopsis Veitchii*). The foliage turns crimson in the fall. Makes a house a home.



# Hardy Perennials

OLD-FASHIONED GARDEN FLOWERS



Digitalis (Foxglove)

Autumn is a good time to plant Hardy Perennials. They get well established during the winter and are ready to start growth with the first sign of spring.

A comparatively small collection enables you to have flowers in bloom all summer. Useful as cut-flowers.

The first figure after a variety indicates height of growth. The next figures indicate the months the flowers bloom in this locality. Allow some variation, according to latitude.

**Directions.**—We send you most of these in strong roots. Allow from 2 to 3 square feet of space for each. After the first severe frost in the fall, cut down the tops to within 3 inches of the ground, and give the bed a good coat of half-rotted manure; thus protect plants and enrich ground; dig manure under in spring before new growth starts.

**PRICES:** Unless otherwise noted, 35 cts. each, 10 for \$2.90, postpaid (remember that our postpaid prices include delivery charges for which many other firms charge extra), or \$25 per 100 . 25 or more at 100 rate



A double spike of Delphinium

**Achillea alba, The Pearl.** 2 ft. 6-10 mo. Bears an abundance of pure white, perfectly double flowers, borne in pretty, graceful sprays. 35 cts. each, 10 for \$2.90, postpaid.

**Aquilegia (Columbine).** You can plant in the sun or partial shade and obtain satisfactory results.

**A. canadensis.** 1-2 ft. 4-6 mo. Scarlet flowers mixed with yellow. 35 cts. each, 10 for \$2.90, postpaid.

**A. chrysantha.** 3-4 ft. 5-8 mo. Yellow; lips tipped claret. 35 cts. each, 10 for \$2.90, postpaid.

**A. cærulea.** 2 ft. 5-7 mo. Violet-blue and white. 35 cts. each, 10 for \$2.90, postpaid.

**A., Farquhar, Pink.** 1-1½ ft. 4-5 mo. Clear pink. 35 cts. each, 10 for \$2.90, postpaid.

**A. nivea grandiflora.** 1-1½ ft. 4-5 mo. Lovely snow-white. 35 cts. each, 10 for \$2.90, postpaid.

**Coreopsis lanceolata grandiflora.** 2-3 ft. 6-9 mo. Emblem Flower of the International Sunshine Society. For profusion of bloom this flower is unsurpassed. Buttercup-yellow flowers on long stems. Splendid for cutting. 35 cts. each, 10 for \$2.90 ppd.

**Cornflower Aster (Stokesia cyanea).** 1½-2 ft. 7-10 mo. Large lavender-blue flowers, 4 to 5 inches across, that somewhat resemble the annual Asters. It is quite hardy and blooms freely on long stems. 35c. each, postpaid.

**Digitalis (Foxglove).** 3 ft. 7 mo. (See cut.) The bold, pointed racemes of cone-shaped flowers are odd and attractive, and look like spires or towers of bells. Does well in a shady place. Plant 6 or more in a clump. Mixed colors only. 35 cts. each, 10 for \$2.90, postpaid.

**Delphinium Belladonna, the Everblooming Hardy Larkspur.** (See cut.) 2-3 ft. 6-10 mo. Flowers are clear turquoise-blue. This variety is *seldom out of bloom* from the end of June until cut down by frost. These constant blooming Delphiniums are greatly valued in perennial borders as blue flowers are scarce. 35c. each, 10 for \$2.90, ppd.

**D. formosum.** 1½-2½ ft. 6-8 mo. Flowers are clear deep gentian-blue with white in the center. Harmonizes beautifully with *Delphinium Belladonna*. 35 cts. each, 10 for \$2.90, postpaid.

## Hardy Chrysanthemums

AS SHOWN IN COLOR ON INSIDE FRONT COVER

These are the most brilliant and showy fall flowers we have. They bloom so abundantly that, from a few plants armfuls of flowers can be gathered for indoors. Their fresh, spicy fragrance has a charm no other flower possesses, and the blooms come at a time when nearly all other flowers have gone.

You can gather bushels of bloom the first season from this selected set of 12

Price 35 cts. each; any 10 for \$2.90, postpaid

**Cherry Red.** Dark cherry-crimson.

**Christmas Gold.** Late-blooming yellow.

**Diana.** Lovely snow-white.

**Hilda Canning.** The best bronze.

**Ida.** Rich yellow. Extra good.

**Lillian Doty.** Delicate, light pink.

**Mrs. E. D. Godfrey.** Light pink

**Mrs. H. Harrison.** Beautiful blush-pink.

**Red Doty.** Wine-red, with silvery reverse.

**Sunshine.** Anemone-flowered. Yellow.

**Tints of Gold.** Very early. Yellow and bronze.

**Uvalda.** Early-flowering; white.

**OFFER 21** The set of 12 Hardy Chrysanthemums for \$3, postpaid.

**OFFER 2** One each of 5 Hardy Chrysanthemums shown on inside front cover for \$1.50, postpaid.

## Fragrant Hardy Phlox

AS SHOWN IN COLOR ON INSIDE FRONT COVER

They will make a handsome display of brilliant flowers year after year. Plant 18 inches apart and keep well watered to insure large heads of bloom.

Price, 35 cts. each, 10 for \$2.90, postpaid

**Beacon.** Lovely carmine-red.

**Champs Elysee.** A royal shade of rosy purple or magenta; very effective.

**Europa.** White flowers with crimson eye. (See page 2.)

**Jewel.** Mauve-rose with carmine-red eye.

**Mrs. Jenkins.** Pure white. Fine bloom-heads.

**Pantheon.** Bright carmine-rose.

**Rhijnstroom.** Beautiful Paul Neyron pink. (See page 2.)

**Thor.** Salmon-pink with a scarlet glow. (See page 2.)

**W. C. Egan.** Lilac, with bright solferino eye. (See page 2.)

**OFFER 21a** The set of 9 Phlox for \$2.25, or, 4 of each, 36 in all, for \$7.50, postpaid.

**OFFER 2a** The set of 4 shown in color on inside front cover for \$1.25, postpaid.

**EARLY-FLOWERING WHITE PHLOX, MISS LINGARD.** Blooms from May till frost. Grows about 2 feet high. Large white flowers with lilac eye. 35 cts. each, 10 for \$2.90, postpaid.

HARDY PERENNIALS, continued



Bearded Iris (Fleur-de-Lis)

Bearded Iris (Fleur-de-Lis)

THE NATIONAL EMBLEM OF FRANCE

These Irises are easily grown and for best results should be planted in a well-drained, sunny position, the roots barely covered. The flowers are large and handsome. For bordering garden walks or for making a nice dividing-line these Irises can be used to advantage and make an exquisite show when in full bloom. They flower in May and June.

**Dr. Bernice.** You should have some of this kind to plant with Loreley (described below). Color is coppery-bronze and dark crimson, making a handsome combination. 35 cts. each, postpaid.

**Florentina Alba.** Grows about 2 feet high and produces large, fragrant white flowers during May. 35 cts. each, postpaid.

**Loreley.** In our opinion this is the loveliest Iris we have seen anywhere. The flowers are very large and are borne in profusion on erect, strong stems, well above the foliage. Color is deep blue, veined white and bordered sulphur-yellow. 35 cts. each, postpaid.

**Mme. Chereau.** White with edges feathered sky-blue. 35c. each, ppd.

**Mrs. Darwin.** Large white flowers spotted with violet and golden yellow. A popular Iris. 35 cts. each, postpaid.

➤ **OFFER** ➤ 22 One each of the above 5 Irises for \$1.50, postpaid.

**Iris pallida speciosa.** Blooms in May. 2½ ft. Standards dark lavender with lighter shadings; falls shaded light purple. A sweet-scented variety with very fine flowers. 40 cts. each, postpaid.

**Burbank's Shasta Daisy.** 1½ - 2 ft. 7-10 mo. This is a lovely pure white flower for mixing with colored flowers of almost any kind in a vase. The long stems make this excellent for cutting, and the white blooms with golden discs in the center are fine for bouquets. 35c. each, 10 for \$2.90, ppd.

**Eulalia gracillima.** Hardy Ornamental Grass. Has slender, narrow, green leaves 4 to 5 feet long. Pinkish colored, plume-like seedheads grace the top of each clump every fall. Very graceful in specimen clumps on the lawn. 35 cts. each, postpaid; clumps, 50c. each □

**Funkia grandiflora** (Plantain Lily or Large White Day Lily). 2½-3 ft. 8-9 mo. Succeeds in sun or shade. Pure white, lily-shaped, fragrant flowers. 35 cts. each, ppd.

**Lobelia cardinalis** (Cardinal Flower). 2-4 ft. 7-10 mo. Rich, fiery cardinal flowers which individually are not showy, but the spikes of bloom are gorgeous. This should be in every planting of perennials. Does well in moist ground. 35 cts. each, postpaid.

**Lychnis chalcedonica** (Maltese Cross, or Scarlet Lightning). 2-3 ft. 7-9 mo. Makes dense heads of vermilion-scarlet flowers. 35c. each, postpaid.

**Pachysandra terminalis.** This plant thrives where others would wither and die. Use it as a ground-cover, especially in the shade. Grows 5 to 8 in. high. 10 for \$2, ppd., \$15 per 100 □

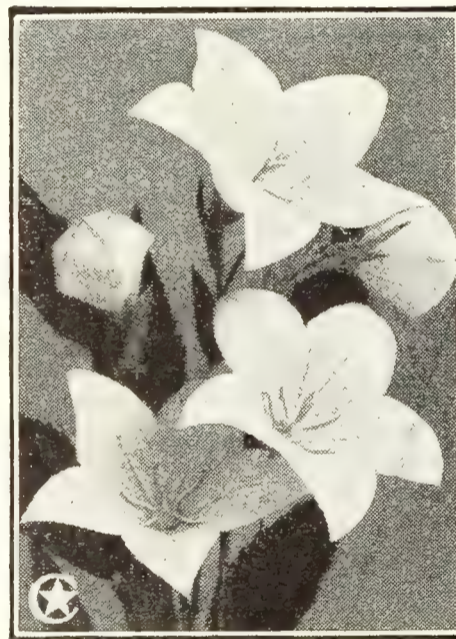
**Plumbago Larpentae** (Leadwort). 4-6 in. 6-10 mo. Especially suitable for bordering beds. The deep blue flowers are borne all summer. 35 cts. each, 10 for \$2.75, postpaid.

**Platycodon** (Balloon Flower, or Japanese Bellflower). 2-3 ft. 7-9 mo. Violet-blue, bell-shaped flowers. 35 cts. each; extra-large roots, 50 cts.; 6 for \$2, postpaid.

**Pyrethrum hybridum roseum grandiflorum.** Large, pink daisy-like flowers. Beautiful for indoor decoration. 35 cts. each, postpaid.

**Veronica** (Speedwell). 2-4 ft. 6-8 mo. Flowers clear blue with purple stamens, on spikes 2 to 4 ft. high. 35 cts., postpaid.

**Yucca filamentosa.** (Adam's Needle, or Spanish Bayonet). 4 ft. 6-7 mo. A most ornamental plant with long, narrow, spiny-pointed leaves, so that native Indians called it "Spanish Bayonet." It bears great panicles of large white flowers and makes a fine tropical effect. Use six or more around the base of your porch. 35 cts. each; 2-yr. size, 50 cts. each, postpaid.



Platycodon (Balloon Flower)

**Gaillardia grandiflora** (Blanket Flower) 2 ft. 6-10 mo. Large, daisy-like flower, which blooms all summer. Red center with scarlet and yellow edge. 35 cts. each, postpaid.

**Golden Glow** (Double Rudbeckia). 5-7 ft. 7-9 mo. Golden yellow flowers. Splendid screen or background. 25 cts. each, postpaid; clumps, 35 cts. each □

**Helianthus, Miss Mellish** (Perennial Sunflower). 4 ft. 7-8 mo. Large, brilliant, yellow flowers. The best of the splendid Hardy Sunflowers. 35 cts. each, postpaid.

**Hemerocallis** (Tawny Day Lily). 3-4 ft. 7-8 mo. Bronze yellow, with carmine marking. 35 cts. each, postpaid.



Yucca (Adam's Needle)

**PRICES** unless otherwise noted, 35 cts. each, 10 for \$2.90, postpaid (remember that our postpaid prices include delivery charges for which many other firms charge extra), or \$25 per 100 □. 25 or more at 100 rate □

□ This sign indicates delivery at your expense.

# C.-P. Selected Peonies

For permanent plantings, no flower can surpass the Peony for massive, showy blooms, and quantities of them from each established plant. They grow well, even in shady locations, and the *flowers increase in size and beauty for two or three years* after the roots are transplanted. Peonies make glorious cut-flowers and are fine when a mass effect is wanted for indoor decoration.

Colors range from snow-white to deepest maroon. We have many more varieties but we offer only the best. We are members of The American Peony Society.

## 6 High-Rated Peonies

At these prices we believe you will not find finer Peonies anywhere.

**ALBERT CROUSSE.** Delicate shell-pink; large, full and well-developed; fragrant. Profuse bloomer. \$1.50 each, postpaid.

**BARONESS SCHROEDER.** Flesh-pink, changing to pure white; very fragrant. A great cut-flower. \$2 each, postpaid.

**EUGENE VERDIER.** Delicate hydrangea-pink, with outer guard petals lilac-white. \$1.50 each, postpaid.

**KARL ROSENFELD.** Rich, clear, glowing crimson. Simply superb. Erect grower and fine for cutting. \$2.50 each, postpaid.

**Mlle. LEONIE CALOT.** Rose-white with soft lilac-pink center. One of the choicest Peonies. \$1.50 each, postpaid.

**MONS. JULES ELIE.** A Peony masterpiece. Color is lilac-pink, shading to deep rose at the base. This is one of the largest Peonies. \$1.50 each, postpaid.

➤**OFFER**➤ 23 One each of the above 6 best Peonies for \$9, postpaid.

## 5 Very Fine Peonies

**ADOLPHE ROUSSEAU.** This is very fine for landscape effect. Very large, dark velvety red with garnet hues and a distinct metallic reflex. An ideal red Peony with shell-like petals. \$1.50 each, postpaid.

**AUGUSTIN D'HOUE.** Rich, brilliant solferino-red with slight silvery reflex. One of the largest of the red Peonies. \$1 each, postpaid.

**COURONNE D'OR.** This is the famous "Crown of Gold." Immense, very full, ball-shaped blooms. The flowers are white but the golden stamens reflect through the petals. \$1 each, postpaid.

**MME. DUCCEL.** Very large, double, compact flower, with center petals incurved. Color silvery lilac-pink. \$1.50 each, postpaid.

**TRIOMPHE DE L'EXPOSITION DE LILLE.** Hydrangea-pink, splashed with crimson tints. A delicate, pleasing color. \$1.50 each, postpaid.

➤**OFFER**➤ 23a One each of the above 5 Peonies for \$5.50, postpaid.

## 4 Ever-Popular Peonies

**EDULIS SUPERBA.** (Pink.) Beautiful clear pink with silvery reflex; very fragrant. *Usually blooms here in time for Memorial Day.* 75 cts. each, ppd.

**FELIX CROUSSE.** (Red.) The color is exceptionally fine, a brilliant dazzling ruby-red, bright and effective. Fragrant. \$1 each, ppd.

**FESTIVA MAXIMA.** (White.) Immense, pure snow-white flowers, often 7 inches in diameter, with a beautiful flake of carmine in the center. So perfect is this flower that it has held first place for over sixty years. 75 cts. each, postpaid.

**GRANDIFLORA.** (Pink.) Bright seashell-pink, shaded delicate lilac and salmon. Produces immense flowers. \$1.50 each, postpaid.

➤**OFFER**➤ 23b The above 4 grand Peonies, each unsurpassed in its color, field-grown roots, for \$3.50, postpaid.

➤**OFFER**➤ 23c The entire 15 Peonies on this page, for \$17.50, postpaid.



PEONY ROOTS MATURE AND ARE READY TO SHIP IN THE FALL. NOW IS THE TIME TO PLANT

# C.-P. Finest Named Hyacinths



## SPECIALLY SELECTED FOR HOUSE CULTURE AND BEDDING

Every Hyacinth bulb we send out *has the blossom already formed inside it.* By regulating the culture (see directions with each order) you can have a beautiful display of bloom for Christmas or other special occasions. Hyacinths remain beautiful a long time and are splendid for table, window, or mantel decoration. Beds on the lawn in the early spring are exquisite. Plant now.

**Grow Hyacinths for Fragrance,** bright colors, and long-lasting flowers. You want these qualities in an indoor flower during the months of winter and no other flowering bulbs can give you more enjoyment, with less care, than C.-P. Finest Named Hyacinths.

The figures, 1, 2, 3 and 4 after the names of the Hyacinths indicate the relative time of flowering—the 1's flower together and are the earliest; the 4's the latest.

Delivered free in the U. S. A. at these prices. Cost per hundred is 75 times price each

	Each	3 for	Doz.
	cts.	cts.	
<b>15 Choice Varieties</b>			
A. Arendsen. (1) Very large; pure snow-white. Extra fine.	27	75	\$2 75
City of Haarlem. (3) Light golden yellow. Considered the best of all.....	27	75	2 75
General De Wet. (2) Soft light pink.....	25	70	2 50
Gertrude. (3) Rich rosy pink..	25	70	2 50
Grand Maitre. (2) Fine blue..	25	70	2 50
King of the Belgians (Roi des Belges). (4) Crimson-scarlet.	25	70	2 50
King of the Blues. (4) Best dark blue. Splendid spike..	27	75	2 75
Lady Derby. (1) Rose-pink..	25	70	2 50
La Grandesse. (3) The finest standard pure snow-white..	27	75	2 75
L'Innocence. (1) White; large.	25	70	2 50
La Victoire (Victory). (2) Brilliant rose-red.....	27	75	2 75
Marconi. (1) Bright red, shaded white. Very large.....	25	70	2 50
Queen of the Blues. (4) Light porcelain-blue.....	25	70	2 50
Queen of the Pinks (3) The best salmon-pink.....	27	75	2 75
Yellow Hammer. (1) Fine yellow, shaded gold. Charming.	25	70	2 50

**➤OFFER➤ 24** One each of the 15 choice named Hyacinths, \$3.50, or 3 of each (45) for \$9.75, postpaid.

### C.-P. CHOICE SELECTED HYACINTHS BLOOM LIKE THIS

The delightful, fresh fragrance of Hyacinths, combined with their bright colors and lasting qualities, places them foremost among flowers for indoor growing in winter.

## Red, White, and Blue Sets

Use a set of the 3 National colors in several windows and start some for your friends. A gift of this kind is appreciated.

Three 27-cent kinds, 3 colors, 75 cts.; 2 of each, 6 for \$1.40  
 Three 25-cent kinds, 3 colors, 70 cts.; 2 of each, 6 for \$1.25

WATCHING YOUR HYACINTH BLOOMS DEVELOP IS A SOURCE OF CONSTANT PLEASURE

## French Roman Hyacinths

**Very early flowering.** Special for indoors only, to be grown in pots or pans. Pot these bulbs at different times and have some in bloom from late November till May. The flowers are delightfully fragrant and smaller than the Dutch Hyacinths, but each bulb produces two or three flower-stalks. **Flowers white.** 27 cts. each, 3 for 75 cts., 12 for \$2.75, 100 for \$20.25, postpaid.



One of the keenest delights in early spring is the fresh fragrance from a bed of Hyacinths

## C.-P. Hyacinths for Pots and Bedding

Hyacinths are perfectly hardy and can be planted outdoors any time before the ground freezes for the winter. It is best, however, to get them planted early, and they can be shipped any time after the middle of September.

They *must* be planted in the fall, for if stored over winter the bulbs lose their vitality and cannot be expected to produce good blooms.

Plant so that the tops will be at least 3 to 4 inches below the surface of the soil when the bed is finished, and put about 2 inches of coarse sand or fine gravel below each bulb, to provide proper drainage. This will also induce good root-growth and consequently

better heads of bloom. Any good garden soil that is properly drained will be just right for growing Hyacinths. A little bone-meal can be added if the ground is poor.

Even a small bed of Hyacinths will make a bright spot of color, laden with fragrance in the spring, or, try a row along the base of your porch, with the bulbs 5 to 6 inches apart. A glimpse of these in the morning before you begin your day's work will help start your day right. Try this.

Our Fine Selected Hyacinths in separate colors enable you to get the colors that please you most and at much lower prices than the named varieties.

Delivered free in the U. S. A. at these prices. Plant 5 to 6 inches apart. Select the color or colors you prefer.

SEVEN COLORS, Pure White, Blush-White, Rose-Pink, Dark Red, Dark Blue, Light Blue, and Yellow.....	3 for	Doz.	100
ALL COLORS MIXED. A bed of mixed colors is always interesting.....	40	1 50	10 00

### “Pan” or “Dutch” Single Miniature (Roman) Hyacinths

Price, 12 cts. each, 3 for 35 cts., 12 for \$1.25, 100 for \$8, postpaid

These bulbs are smaller than the regular Dutch Hyacinths and quite distinct from the French Romans. (See page 24.) If you get several sets and plant them in pots at intervals of two weeks you can have bloom for months in the winter and early spring. These Hyacinths are quite hardy. Try a bright border around your front porch and use them in your perennial bed. For outdoors plant 4 to 5 inches apart.

- General De Wet. A most beautiful shade of soft pink.
- Gertrude. Rich rosy pink. Makes a very erect, compact truss.
- Grand Maitre. Lavender-blue. The most popular of this color.
- L'Innocence. Pure white. Makes extra-fine spikes.
- Queen of the Blues. Light porcelain-blue. A delicate shade.



Pot some “Pan” Hyacinths for indoors

➤ **OFFER** ➤ 25 1 each, 5 in all (enough for a pan 6 in. across), for 55 cts. or 3 sets, 15 in all, for \$1.50, postpaid.



## Vivid Radiant TULIPS for Early Spring Bloom

Before the trees and shrubs come in leaf, how eagerly one looks forward to the first touch of color outdoors. Tulips provide this color, and give it lavishly, for they can be had in such variety that you may arrange practically any color scheme you want, to make a delightful and never-to-be-forgotten picture.

You can grow these hardy bulbs in any reasonably good soil if they are planted where they will get at least a moderate amount of moisture, because it will not do to have the ground too dry. Plant so that the top of the bulb is *about 4 inches* below the surface of the soil when planting is done.

Some coarse sand placed under each bulb will be beneficial and will induce quicker root action.

Tulips must be planted now if you want a gay bed next April and May. What a wealth of beauty you can get for a minimum of trouble in planting and at very moderate expense.

## Single Early Tulips. 12 Best Named Sorts

The figures following the variety names indicate their earliness of bloom. The 1's are the earliest of all; 2's follow before the 1's are gone, etc. The height is indicated by M for Medium and T for Tall.

Prices, delivered free in U. S. A.	Each	Doz.	100	Prices, delivered free in U. S. A.	Each	Doz.	100
Belle Alliance. 3 M. Rich scarlet with yellow base.....	cts. 08	cts. 85	\$6 00	Prince of Austria. 2 M. Orange-red. Sweet-scented. Fine bedder..	cts. 10	1 00	\$7 00
Cottage Maid. 2 M. Creamy white, edged rose-pink.....	08	85	6 00	Rising Sun. 2 M. Enormous flowers of brilliant yellow.....	09	1 00	7 00
Couleur Cardinal. 3 M. Brilliant crimson. Large flower on strong stems.....	10	1 00	7 00	Rose Luisante. 2 T. Brilliant rosy pink.....	09	90	7 00
Flamingo. 2 M. Extremely lovely. Carmine-rose on white ground....	09	85	6 00	Vermillon Brilliant. 2 M. Bright glittering scarlet, yellow base.....	09	90	7 00
Keizerkroon (Grand Duke). 1 T. Red, gold and yellow.....	11	1 10	8 50	Wouverman. 2 M. Rich claret-purple. Large. Good to use with Lady Boreel (white).....	07	75	5 00
Lady Boreel (White Joost Von Vondel). 2 M. Largest intense white...	08	85	6 00	Yellow Prince. 2 T. Yellow, sometimes streaked red.....	08	85	6 00

OFFER 26. One each of these lovely early-blooming, named Tulips, 12 in all, for 90 cts., postpaid.

OFFER 26a. Five each of above early-blooming, named Tulips, 60 in all, for \$4.25, postpaid.

## C.-P. Superfine Single Tulips for Bedding

### IN SEPARATE COLORS

You can have these superfine Tulips in separate colors or mixed, just as you prefer. You can depend upon these bulbs to produce exquisite blooms.

First-class blooming bulbs, your choice. *White, Pink, Crimson, or Yellow.*

60 cts. per doz., \$4.25 per 100, \$37.50 per 1,000, delivered free.

*Specially selected to bloom at the same time, and make a gorgeous blaze of color*

### C.-P. SUPERFINE MIXTURE

Try some for permanent plantings among or around your shrubs. Tulips do not need to be taken up after blooming if planted 4 to 5 inches deep.

Mixed by ourselves, so that we know these are uniform in height. *Will include four colors.*

50c. per doz., \$3.75 per 100, \$35 per 1,000, delivered free.

# EARLY FLOWERING Best Double Tulips

FOR RICHEST EFFECT PLANT ONLY ONE VARIETY OR COLOR IN A BED

The figures following the varieties indicate their earliness. Those marked "1" flower together and are the earliest. Those marked "2" follow, etc. They make a sturdy even growth and the blooms come on erect stems. These are first-class bulbs and such as can be depended on to produce fine, large, well-developed flowers of good substance and rich colors. The blooms are so large and double they look like dwarf peonies. The double Tulips are wonderfully effective in beds and they are through blooming in time to take up and make room for cannas, geraniums, or other summer-flowering plants.

Delivered free in the U. S. A. at these prices

## These Tulips Look Like Dwarf Peonies

- Boule de Neige.** 2. Immense white flower. Splendid for bedding. 7 cts. each, 12 for 75 cts., 100 for \$5.50.
- Crown of Gold (Couronne d'Or).** 2. Semi-double; deep yellow, flushed orange-red. Flower large. Splendid for beds. (See illustration.) 8c. each, 12 for 80 cts., 100 for \$6.
- Imperator Rubrorum.** 2. Large; lovely, rich brilliant scarlet flowers. Beautiful when massed. 8c. each, 12 for 90 cts., 100 for \$7.
- Murillo.** 2. Delicate rosy pink, flushed with white. 6 cts. each, 12 for 65 cts., 100 for \$4.50.
- Rubra Maxima.** 3. Bright crimson-scarlet. 7 cts. each, 12 for 70 cts., 100 for \$5.
- Salvator Rosa.** 2. A very large, semi-double flower like Crown of Gold. Color, deep rose, slightly flushed white. 7c. each, 12 for 80c., 100 for \$6.
- Schoonoord (White Murillo).** 2. A magnificent white; very large and double. 7 cts. each, 12 for 75 cts., 100 for \$5.50.
- Tournesol.** 2. A most attractive rich scarlet, edged with yellow. 7c. each, 12 for 75c., 100 for \$5.50.
- Separate Colors, Varieties not Named.** Your choice: *White, Pink, Crimson, or Yellow.* 12 for 65 cts., 100 for \$4.50, 1,000 for \$40.
- Mixed Colors.** Fine to use in large beds, around porches, along fences, etc. 12 for 50 cts., 100 for \$4, 1,000 for \$35.



CROWN OF GOLD  
(COURONNE d'OR)

➤OFFER➤ 27 One each of the above 8 named Double Early Tulips for 50 cts., or 5 of each, 40 in all, for \$2.35.

## Fancy Parrot or Dragon Tulips

Price, 7 cts. each, 12 for 70 cts., 100 for \$5

Parrot Tulips are very large and belong to the May-flowering class. The unique flowers are distinct from all others and have intensely brilliant, curiously fringed and corrugated petals. Plant five or six of a kind in your perennial bed, for these bulbs are quite hardy and bloom year after year.

- Constantinople.** Gorgeous orange-scarlet, shaded orange, with black markings in the center.
- Cramoisi Brillant.** Brilliant, vivid crimson.
- Lutea Major.** Bright yellow with distinct markings of crimson and green.
- Perfecta.** Immense canary-yellow flower, vividly striped with red.

➤OFFER➤ 27a Three each of above named Parrot Tulips, 12 in all, for 65 cts., postpaid.

## Get Acquainted With

**MIXED PARROT TULIPS.** They are delightfully interesting and you will have something unusual to show your friends. Price, 3 for 20 cts., 12 for 60 cts., 100 for \$4, postpaid.

## Crown of Gold Tulips

You want something bright to start your flower season and Crown of Gold Tulips will give sure satisfaction. The illustration shows what a lovely flower this is, with its richly colored, firm blooms borne on strong stems.

A round bed or border of this one kind is certain to attract favorable and delighted attention, not only from the owner of the flowers, but from practically every passer-by, and you can rely on a good bloom from every bulb.

You can have a bed of these lovely Tulips every season by saving the bulbs after the tops have died down and replanting in the fall.

Crown of Gold has been a leading double Tulip for years and it is as yet unsurpassed for mass planting.

37 bulbs, for 2½-ft. circular bed . . . . . \$2.15, postpaid.  
91 bulbs, for 4-ft. circular bed . . . . . \$5.25, postpaid.

## Mixed Double Early Tulips

37 bulbs, for 2½-ft. circular bed . . . . . \$1.35, postpaid.  
91 bulbs, for 4-ft. circular bed . . . . . \$3.50, postpaid.

SEE OTHER TULIPS, PAGES 28, 34 AND 35

# C.-P. Crocuses

These Crocuses are the improved strains, noted for large flowers and brightest colors. They are entirely hardy, and like a rich, dry soil and sunny location. They are suitable for planting in beds and borders, also for edging in ribbon lines of any desired color; for planting in the grass in lawn or yard. Crocuses are also very highly valued for indoor flowers.

*How to Grow Crocuses.*—One inch is deep enough to plant. If planted deeper they may not bloom. It is best not to plant in even rows, and a good plan is to scatter them over the lawn and plant where they happen to fall. Just dig up a piece of sod and put two or three bulbs in each spot. For indoor growing they are fine but do not expose them to heat or they will not flower. Plant six to eight bulbs in a 5-inch pot.



A few bulbs in a 6-inch pot

Plant Crocuses early



Plant Crocuses (plenty of them) about one inch deep in early autumn

## LARGE-FLOWERING Named Crocuses

Price, 12 for 50 cts., 100 for \$3, 250 for \$6, postpaid

- Baron von Brunow.** Rich purplish blue flower. Very fine.
- King of the Whites.** The best and largest white Crocus.
- King of the Yellows.** A beautiful pure golden yellow with large flower. Lovely in early spring.
- Sir Walter Scott.** White, striped purple.

➤ **OFFER** ➤ 28 6 each of the above, 24 in all, for 90c. 12 of each, 48 in all, for \$1.50, postpaid.

## Crocuses in Separate Colors for Naturalizing

Scatter them bountifully over your lawn and these brilliant dainty flowers will give you joy next spring at extremely low cost.

Prices, delivered free in U. S. A.

	Doz.	100	250
White and Light...	\$0 35	\$2 00	\$4 50
Purples.....	35	2 00	4 50
Striped colors.....	35	2 00	4 50
Yellows, First-size..	35	2 00	4 50
All colors mixed....	25	1 25	3 00

Order in quantity. It often pays to get a friend to order with you

➤ **OFFER** ➤ 28a Remember the wonderful colors in Crocuses—Purple, Yellow, Violet, Striped and White. We will select and send you 25 White and Light, 25 Purples, 25 Striped, and 25 Yellows—  
100 SPLENDID CROCUSES, AS ABOVE, ONLY \$1.25, OR 200 FOR \$2.50, POSTPAID

# May-Flowering or Cottage Garden Tulips

Price, 6 cts. each, 12 for 60 cts., 100 for \$4.50, postpaid

- Gesneriana lutea.** Splendid, large, bold flowers, bright, rich golden yellow, fringed orange-red.
- Gesneriana spathulata major.** Hardy and very durable; grows 1½ to 2 feet high. Intense fiery scarlet with bright, shining, blue-black center.
- Grenadier.** Immense orange scarlet flower, exceptionally brilliant.
- Inglescombe Pink.** Rosy pink with a lovely flush of salmon and buff.

- Inglescombe Yellow.** Canary-yellow. Sometimes referred to as a "Yellow Darwin Tulip."
- John Ruskin.** Salmon-rose edged with lemon-yellow; the inside is deep rosy lilac, edged yellow. Very handsome.
- La Merveille.** Delightfully scented, long, large flower. Orange scarlet flushed rose.
- Picotee, White.** Snow white edged with crimson. Flower reflexed and vase shaped.

MIXED COTTAGE GARDEN TULIPS. 12 for 45 cts., 100 for \$3.50, 1,000 for \$32, prepaid

➤ **OFFER** ➤ 28b The above 8 named Tulips for 35 cts., or 5 of each, 40 in all, for \$1.65, postpaid



# PLANT HARDY NARCISSUS ALONG THE EDGE OF THE SHRUB BORDER

AS foretold in our 1925 catalogue, the Federal Horticultural Board no longer permits the importation of these foreign-grown Narcissus; hence we offer what we believe to be the best American-grown bulbs to be had, though without any guarantee as to their blooming qualities.

## Giant Paper-White Narcissus (See illustration)

*Grows in water and pebbles, or in soil*

PLANT YOUR BULBS IN TIME TO HAVE THEM IN BLOOM ON CHRISTMAS DAY

Plant your bulbs in a dish, cover them with water and set in a cool, dark place for two weeks. When brought to the light, keep them in a cool place and they will bloom in six weeks, or eight weeks altogether after planting. A succession of deliciously fragrant, snow-white flowers can be obtained by planting every two weeks. Take one lot out to the light and plant another lot. Order your winter's supply now and store them in a cool cellar to use as wanted. Order early. Price, 15 cts. each, 4 for 50 cts., 6 for 75 cts., 9 for \$1, 12 for \$1.25, 100 for \$9, postpaid.

## Chinese Sacred Lily

THE WATER FAIRY or "SHIN SIN FAR"—CHINESE "JOSS FLOWER"

Bears great clusters of deliciously fragrant, pure white, wax-like blossoms with golden yellow centers. They are usually grown in a bowl of water with pebbles to hold the bulbs in place. Plant 3 to 6 bulbs in a dish and place a piece of charcoal with the pebbles to keep the water sweet. First-size, quick-blooming bulbs, 25 cts. each, 3 for 60 cts., 12 for \$2, postpaid.

►OFFER► 29 Six Giant White Narcissus and 6 Chinese Sacred Lilies (12 bulbs in all) for \$1.60, postpaid.



## Hardy Narcissus (Daffodils)

No flowers in early spring are more eagerly and lovingly welcomed than the cheery Daffodils. With their golden trumpets they seem to announce that they are foremost among the flowers that will keep you happy till winter comes again. There are two distinct groups, the single, large-flowered trumpet shape and the double Daffodils. Plant them in quantity in woodlands, along hedges and in perennial borders.

### 2 LARGE-FLOWERED TRUMPET NARCISSUS

**Emperor.** Clear, rich golden yellow, with immense fluted trumpet. 20 cts. each, 12 for \$2, 100 for \$12.50, postpaid.  
**Empress, White Wings.** Large, bold flowers; wings white, trumpet yellow. 20 cts. each, 12 for \$2, 100 for \$12.50, postpaid.

### 3 LARGE-FLOWERED DOUBLE NARCISSUS

**Alba plena odorata** (The Double White Poet's Narcissus). Double, snow-white. A most charming variety and one of the most satisfactory of the double Narcissus. 15 cts. each, 12 for \$1.40, 100 for \$8, postpaid.  
**Orange Phoenix** ("Eggs and Bacon"). Cream-white, mixed orange and white. 20 cts. each, 12 for \$1.75, 100 for \$12, postpaid.  
**Sulphur or Silver Phoenix** ("Codlins and Cream"). Creamy white, sulphur center. 20 cts. each, 12 for \$1.75, 100 for \$12, postpaid.

►OFFER► 29a One each of above 5 Daffodils for 75 cts., or 3 of each (15 in all) for \$2.25, postpaid.

### Hardy Poet's Narcissus

Delightfully fragrant, long stemmed and splendid for cutting. They increase rapidly when undisturbed. See illustration. **Narcissus poeticus** (The Pheasant's Eye). Pure white, star-like flowers with orange cup edged with crimson; hardy. 10 cts. each, 3 for 25 cts., 12 for 75 cts., 100 for \$5, postpaid.

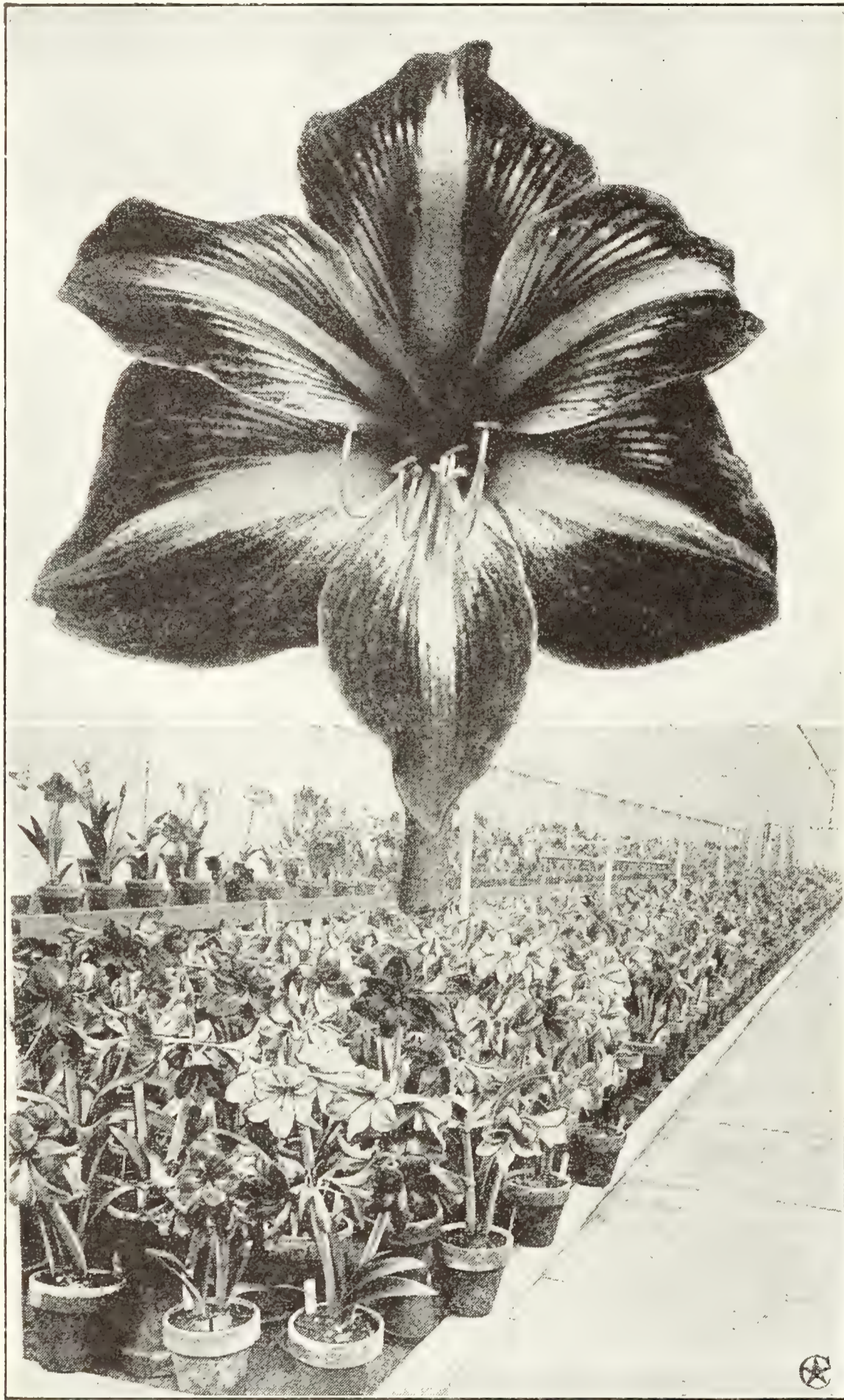
### Narcissus Jonquilla (Jonquils)

Blooms resemble the Giant White Narcissus and are very fragrant. The flowers are golden yellow. **Double Jonquils.** 15 cts. each, 3 for 40 cts., 12 for \$1.25, 100 for \$9, postpaid. **Single Jonquils.** 12 cts. each, 3 for 30 cts., 12 for \$1, 100 for \$6, postpaid.



Poet's Narcissus Naturalized

# Giant Amaryllis, Hybrids of Vittata



Giant Amaryllis, Hybrids of Vittata, growing in greenhouse

FLOWERS 5 TO 7 IN. ACROSS  
(See cut)

If you could see in reality, the flowers of these magnificent Amaryllis you would be amazed, first at their size and then at the brilliancy of the colorings, which range from deep reddish maroon to pure white and striped. Our bulbs are grown from seed obtained several years ago from France through the Department of Agriculture at Washington, where they had tested these Amaryllis—as shown in the greenhouse in the illustration. Every bulb has a magnificent, flower-crowned stalk and some have two, with two or more flowers to each. Plant your bulbs in good rich soil, mixed with a little sand and *do not* use a pot much larger than the bulb, for Amaryllis bloom best when they are pot-bound. Strong blooming bulbs, 50 cts. each, 3 for \$1.35, postpaid.

**Pink Amaryllis, or Belladonna Lily.** Rose-pink, penciled silvery white; very sweet. 25 cts. each, 3 for 60 cts., postpaid.

**A. Hallii** (*Lycoris squamigera*). Delicate lilac-pink, shaded with clear blue. The foliage dies down in July, after which masses of bloom spring up as if by magic. Plant in the fall. 75 cts. each, postpaid.

**Ismene Calathina.** Large fragrant flowers, like an amaryllis, novel in form and snowy white. Generally blooms in three to four weeks after planting. 25c. each, postpaid.

## The Regal Lily

(*Lily myriophyllum*)

An absolutely hardy Lily with magnificent, large, pure white flowers flushed with pink and the throat a clear canary-yellow. Delightful jasmine-like perfume. Blooms outdoors early in July. Fine for forcing. \$1 each, 10 for \$9, postpaid.

## Bermuda Easter Lily (*Lilium Harrisii*)

The Bermuda Easter Lily grows easily and is sure to bloom. The flowers are pure snow-white, very large and fragrant, and borne in splendid clusters. Plant in a pot or box which is at least 6 inches deep and well drained; good, turfy soil with a little old, well-rotted manure is best; the bulb should be covered about 1 inch deep; firm the earth well around it, water thoroughly and set away in a cool place three weeks or more till the roots begin to start, then bring to the light. They should bloom in about three months from time of planting. Ready in August. 50 cts. each, 3 for \$1.25, postpaid.

## The Madonna Lily (*Lilium candidum*)

WE SUPPLY THE LARGEST SIZE PROCURABLE

Also known to many as the Annunciation Lily. Its deliciously fragrant, pure white, perfectly formed flowers come on strong, upright stems. *Bulbs for outdoors should be planted early in the autumn.* For indoors, plant 2 or 3 bulbs in a pot and bury the pot outside until they freeze, then take indoors and keep in a cool place until you want them to grow. Dust the bulbs lightly with powdered sulphur, and do not cover with more than 2 inches of soil. 30 cts. each, 3 for 75 cts., 12 for \$2.50, postpaid. (See cut, page 31.)

# Free-Flowering Fragrant Freesias

Freesias are extremely valuable as cut-flowers, as they fill the air with delicate perfume and their endurance is remarkable. The bulbs are small and can be planted six to twelve in a pot. Graceful in form, easily grown, and if planted early you can have blooms for Thanksgiving and a later planting for Christmas.

**FREESIA, "PURITY."** The flowers of this grand Freesia are pure, glistening white. The stems are 10 to 12 inches long and very wiry, making it most valuable for cutting. Each bulb should produce from two to four stems of lovely, fragrant flowers. First size, 3 for 15 cts., 12 for 45 cts., 100 for \$3. Largest size, 2 for 12 cts., 12 for 60 cts., 100 for \$4, postpaid.

## 3 New Colored Freesias

Plant some colored varieties with "Purity" for added charm to your Freesia display.

<b>California.</b> A lovely shade of yellow.	} Price 8 cts. each, 12 for 85 cts., 100 for \$6, postpaid.
<b>General Pershing.</b> Orange-red shading to pink.	
<b>Splendens.</b> Delicate blue or lavender shade.	
<b>Freesias. Mixed Colors.</b> 6 cts. each, 12 for 65 cts., 100 for \$4.50, postpaid.	



Fragrant Freesias

## Beautiful Calla Lilies (Richardias)

Pot the roots in fresh soil containing well-rotted manure and sand, and some sand should be immediately about the roots. Use plenty of drainage material in the bottom of the pot and do not have the pot too large or you will have few flowers. Callas need to be rested from middle of June until September by letting them dry gradually. When you repot use good, rich soil.

**EVERBLOOMING DWARF CALLA LILY, GODFREY.** Flowers white and medium-sized. Very free bloomer. *Growing plants only* (no dry bulbs), 25 cts. each, postpaid.

**SPOTTED CALLA** (*Richardia albo-maculata*). The leaves of this variety are deep green with numerous white spots. Flowers are white, with a black center. 25 cts. each, postpaid.

**WHITE CALLA**, or *Lily-of-the-Nile* (*R. ethiopica*). Needs rich soil, heat, and moisture. Use liquid manure once a week. 35 cts. each, postpaid.

**CALLA ELLIOTTIANA.** Foliage dark green with creamy white spots. Flowers are rich golden yellow, of velvety texture. 30 cts. each, postpaid.

## Grape Hyacinths (Heavenly Blue)

A rich purple color and noted for their agreeable musky fragrance. Dwarf in growth and effective as an edging. 7 cts. each, 12 for 60 cts., 100 for \$4, ppd.

## Free-Flowering Oxalis

Oxalis produce masses of flowers and lovely foliage. The bulbs are small and several should be planted in a 4-inch or 5-inch pot.

**Oxalis, Bermuda Buttercup.** Bright golden yellow.

A great bloomer. 2 for 10 cts., 12 for 45 cts., ppd.

**Oxalis, Grand Duchess.** From California. In three colors, *White*, *Pink*, and *Lavender*. 3 for 10 cts., 12 for 35 cts., postpaid.

**Grand Duchess Oxalis, Mixed.** 12 for 25 cts., 100 for \$2, postpaid.

## Scilla Sibirica (Wood Hyacinths)

These lovely little wild Hyacinths are suitable for planting in rock-gardens and among hardy perennials. They flower with the snowdrops. Color exquisite bright blue. 12 for 75 cts., 100 for \$5, ppd.

## Early Snowdrops (Galanthus)

**Single.** The single Snowdrops are charming in their simplicity. 12 for 65 cts., 100 for \$4, postpaid.

## Zephyranthes (Fairy Lilies)

These are small bulbs which should be planted in clusters, about six to a 5-inch pot. Bloom profusely.

**Z. rosea.** Charming rose-pink. 10c. ea., 12 for \$1, ppd.



THE MADONNA LILY

The Madonna Lily (*Lilium candidum*). See page 30

## Plant Food, Insecticides, Etc.

Better Balanced Plant Food  
In Convenient Tablet Form

# STIM-U-PLANT

### PLANT STIMULANT TABLET

THE IDEAL YEAR-ROUND FEEDING METHOD  
FOR ALL PLANTS—INDOORS AND OUT

Plants in pots, especially when growing vigorously, soon use up the nourishment that is in the soil, therefore, to keep your potted plants healthy, feed them about every ten days or two weeks and *avoid the error of feeding too much at one time.*

#### EASY TO USE

Simply insert in soil near plants, or dissolve in water at the rate of four tablets to the gallon and apply as liquid manure.

Complete directions with every package. 30 tablets 25 cts.; 100 tablets, 75 cts.; 1,000 tablets, \$3.50, postpaid.



Roses need care in the fall when nights are cool and damp. The foliage should be kept free from mildew so the plants will be vigorous and healthy when winter arrives. Star Rose Dust has been tried, tested, and used by ourselves as the most efficient control known for fungous diseases, such as mildew or black-spot, also for destroying slugs and caterpillars that eat the foliage.

Apply by shaking through a fine cloth or use the *Hand Dust Gun*. See next column.

Fungous diseases spread rapidly in damp weather if neglected. Prevention is always better than cure. Get your supply of Star Rose Dust now and have it on hand to use when needed. Price, 50 cts. per lb.-can, postpaid.

### Hand Dust Gun

For efficiently dusting Star Rose Dust on Roses so the foliage gets properly protected from mildew and black-spot. Made in hand sprayer form. \$1.35, postpaid.

### Black-Leaf 40 • Concentrated Nicotine

A concentrated solution of nicotine sulphate for destroying green fly and sucking and eating insects on Roses and other plants. Kills lice in chicken-houses, dog-houses, etc. Can easily be applied with a rubber hand sprayer. 1 oz. 35 cts., postpaid.

### C.-P. Rubber Plant Sprayer

For house plants. Makes a fine, misty spray. Useful for sprinkling clothes before ironing as well as for spraying insecticides. \$1.25, postpaid.

### Pruning Shears

**Men's.** Strong and first class every way. 9 in. long. Suitable for pruning light or heavy wood. A garden necessity. \$2.25 each, postpaid.

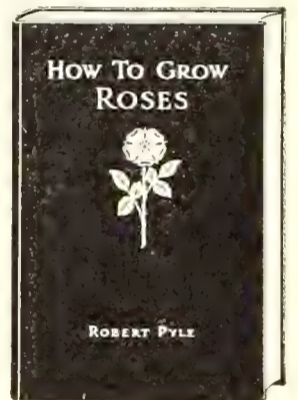
**Ladies'.** Neat, strong Pruning Shears, well made, nickel-plated, and small to suit a lady's hand. 6 in. long, \$1.90 each, postpaid.

### How to Grow Roses

By ROBERT PYLE

Keep a copy where you can refer to it easily and often. Use it in planning, in ordering, and in planting. It tells about beautiful and famous rose-gardens of which you have heard. Its 192 pages contain a wealth of photographs of these gardens, as well as of the individual flowers you know so well or have always wanted to know and to grow. Sixteen pages are in full color!

"How to Grow Roses" is a year-around joy. You will want to use it in the spring, fall, and summer, and to read it during the winter. It makes an acceptable gift to a flower-loving friend. Price \$2, postpaid to any address.



## Flower Seeds for Fall Planting

Hardy Biennials and Perennials should be sown now

	Pkt.
<b>Aquilegia</b> (Columbine). Many beautiful colors. \$0	10
<b>Bellis perennis</b> (English Double Daisy). White, pink, red, and variegated, mixed. . . . .	10
<b>Campanula</b> (Canterbury Bells). Lovely bell-shaped flowers in blue, pink, white, etc. Single, mixed colors. . . . .	10
<b>Carnations.</b> Double mixed. Sown now, will bloom next season. . . . .	10
<b>Chrysanthemum.</b> Finest mixed. C.-P. Hardy Pompons, to bloom in the fall. . . . .	15
<b>Coreopsis.</b> Like golden yellow cosmos. . . . .	10
<b>Delphinium, Belladonna</b> (Everblooming Hardy Larkspur). Sky-blue flowers on long stems. . . . .	15
<b>Delphinium formosum.</b> One of the finest Larkspurs; blue with white eye. . . . .	10
<b>Dianthus plumarius.</b> Original Clove Pink. . . . .	10
<b>Digitalis</b> (Foxglove). Mixed colors. . . . .	10
<b>Gaillardia</b> (Blanket Flower). Large daisy-like flowers red and yellow. Blooms all summer. . . . .	10
<b>Hollyhock, Mammoth Allegheny.</b> Finest mixed. . . . .	10

	Pkt.
<b>Japan Iris.</b> Lovely orchid-like flowers. . . . .	\$0 10
<b>Myosotis</b> (Forget-me-not). Beautiful blue. . . . .	10
<b>Tufted or Bedding Pansies</b> (Violas), <b>Mixed.</b> Brilliant colors, all shades. . . 1/4oz. 50 cts. . . . .	10
<b>Pansy, Giant Exhibition.</b> The largest and best shaped flowers and finest colors. Plant seed now for spring bloom. . . . 1/8oz. \$1.50. . . . .	25
<b>Poppy, Oriental.</b> Brilliant scarlet. . . . .	10
<b>Shasta Daisy.</b> Large snow-white flowers. . . . .	10
<b>Sweet Peas, C.-P. Mixed Spencers.</b> Sow late in October or early in November, according to latitude, in a situation that will warm up quickly in the spring. Spade the ground 1 to 1 1/2 feet deep and sow the Peas thickly in a trench about 2 inches deep. Cover well for winter. Oz. 35 cts., 1/4lb. 85c. . . . .	10
<b>Sweet William.</b> Deliciously sweet. 1/2oz. 25c. . . . .	10
<b>Wallflower.</b> Makes lovely heads of delightfully fragrant golden flowers. Can be grown in very poor soil. . . . .	10

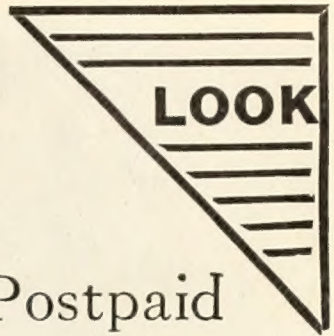
**Grass Seed, C.-P. VELVET GREEN MIXTURE.** For seeding down new lawns and renovating old ones. Use 1 quart (10 ounces) for 200 square feet. Price, 50c. per qt., ppd. (Send for prices in bulk.)

Join the American Rose Society.  
Secretary, West Grove, Pa.

Largest single flower Society in America and is most helpful. For information, write to Robert Pyle,

# Money-Saving Sets

All First-Class Stock—Every Offer Delivered Free



For \$2, Postpaid

## WELL-ROOTED PLANTS

- Offer No. 330 10 Hardy Perennials, a good assortment, including some brilliant Phlox, Aquilegias, and other free-flowering plants to start a hardy garden. These Perennials produce quantities of brilliant bloom every year and once planted they are there to stay. Our selection.....\$2
- 331 4 Choice Hardy Climbing Roses for a summer-house, arch, trellis, arbor, etc. We will send four colors—red, pink, white, and yellow—strong, 2-yr., field-grown plants, our selection..\$2
- 332 3 Choice Hybrid Tea Roses, in three colors. Lovely varieties to bloom from June until frost. Our selection.....\$2
- 333 3 Perfectly hardy Hybrid Perpetual Roses, 1 each: Red, Pink, and White, for planting in northern states. Our selection.....\$2

Bright, fragrant flowers growing indoors in winter are an unspeakable delight to most people. No luxury expenditure can bring you more lasting joy than money spent for flowering plants or bulbs. Try an extra \$1 worth now! Every penny spent this way will repay you.

## Plants for \$1, Postpaid

- Offer No. 334 2 Choice Hardy Peonies, unnamed. You get good varieties and fall is the time to plant Peonies. Our selection.....\$1
- 335 5 Hardy Perennials, once planted always there. Perennials are always satisfactory and they do not need much care. Our selection.....\$1
- 336 5 Lovely House Ferns, always green and attractive. Everyone needs Ferns. Try some in your hall if you have not already done so. Our selection..\$1
- 337 4 Choice Hardy Flowering Shrubs, including 1 *Hydrangea paniculata*, 1 *Japanese Snowball*, and 2 *Spiræas*, 1-year size.....\$1

## Bulbs for \$2, Postpaid

- Offer No. 338 18 Unnamed Hyacinths, Assorted Separate Colors. These Hyacinths are fine for growing in pots or for bedding as they are perfectly hardy and so easily grown that anyone can be successful with them. Our selection.....\$2
- 339 16 Flowering Bulbs, including 10 Giant White Narcissi, and 6 Chinese Sacred Lilies, all to grow in water.....\$2
- 340 18 Lovely fragrant flowers from bulbs to grow in pebbles or sand and water. The pebbles and sand are simply to keep the bulbs in place while growing 6 Pan or Dutch Hyacinths, 9 Giant White Narcissi, 3 Chinese Sacred Lilies,.....\$2
- 341 30 Flowering Bulbs, including 6 Pan or Dutch Hyacinths, 6 Giant White Narcissi, 6 Grand Duchess Oxalis, 6 Colored Freesias and 6 Freesia Purity..\$2

## Bulbs for \$1, Postpaid

- 342 4 Lovely Lilies for indoor bloom, including 1 Giant Amaryllis, 1 *Ismene Calathina*, 1 *Zephyranthes*, and 1 *Madonna Lily (Lilium candidum)*....\$1
- 343 20 Bulbs for making a sunshiny winter indoors including, 2 Hyacinths, 6 Tulips, 6 Crocuses, 2 Giant White Narcissi and 4 Freesias, our selection, 20 bulbs in all for.....\$1
- 344 20 Bulbs for naturalizing or for indoor planting, including 8 lovely, early blooming Crocuses, 6 fragrant Jonquils, and 6 beautiful Poet's Narcissi, all our selection, 20 bulbs for.....\$1
- 345 20 Tulips including 4 Darwins, 4 Breeders, 4 Parrots, 4 Cottage and 4 Double Early. A nice assortment for either indoor or outdoor growing showing the type of the different classes, for...\$1
- 346 10 Narcissi and Jonquils for either indoor or outdoor growing, including 2 Single, 2 Double Daf-fodils, 2 Poet's Narcissi, 2 Single and 2 Double lovely, fragrant Jonquils, 10 in all, our selection for.....\$1

Be sure to order by offer number only

## Five Ornamental Ferns for Indoors

SEE PRICES BELOW

**WHITMANII.** (See illustration.) The large, broad, dense, feathery fronds make a compact, bushy plant of pleasing light green. Occasional fronds may come single and they should be cut out at the base to keep the plant looking its best.

**ROOSEVELT:** Resembles the famous Boston Fern, but produces twice as many wide, drooping fronds, and the pinnae are beautifully undulated. The fronds do not grow as long as the Boston Fern.

**TEDDY JUNIOR.** The fronds are the same undulated type as the Roosevelt Fern, but they are shorter and more freely produced. Makes a lovely, compact, upright growth and forms a most symmetrical plant.

**THE NEWPORT PARLOR FERN (*Nephrolepis Scottii*).** Entirely different from other kinds. The leaves are narrow, short, firm, and very freely produced, making a very beautiful plant for table decoration.

**SCHOLZELI** (The Crested Newport or Scottii Fern). The pinnae (or leaflets) of each frond are curled and crinkled giving a fluffy appearance that is most attractive.

**PRICE.** 35 cts. each, postpaid. Larger sizes 50 cts. and \$1 each, delivery not prepaid.



Whitmanii Fern

➔ **OFFER** ➔ 33 One each of above Ferns, 5 in all, for \$1.60, postpaid. Largest size, 1 each for \$4.50, delivery not prepaid.

## Mammoth Breeder Tulips

Breeder Tulips are so named because they are the "Mother bulbs" from which were developed the striped and vari-colored varieties by the Holland hybridizers. In this class you can get the apricot, bronze and old gold colors not to be had in the Giant Darwins.

You can plant these Tulips with the Darwins for they have the same type of growth, magnificent, firm, large flowers on long strong stems and they bloom at the same time.

The lovely bronze tones in the Breeder Tulips cannot be duplicated in any other popular flower and they harmonize beautifully with the more brilliant colors of the Darwins. See cut.

### Six Named Varieties

Price, 12c. each, 12 for \$1.25, 100 for \$9, postpaid

**Apricot.** Beautiful bronzy buff color, shaded ruddy apricot, with olive base. A leading kind.

**Cardinal Manning.** Rosy violet and rose-brown.

**Godet Parfait.** Bright violet, white base; large flower.

**Golden Bronze.** Old gold, shaded bronze.

**Panorama.** Deep orange with mahogany shadings.

**Yellow Perfection (Old Gold).** Light bronze-yellow, edged with gold.

**C.-P. Breeder Tulips, Mixed.** A mixture of the lovely bronze, buff, and other art shades. 12 for 85 cts., 100 for \$6, postpaid.

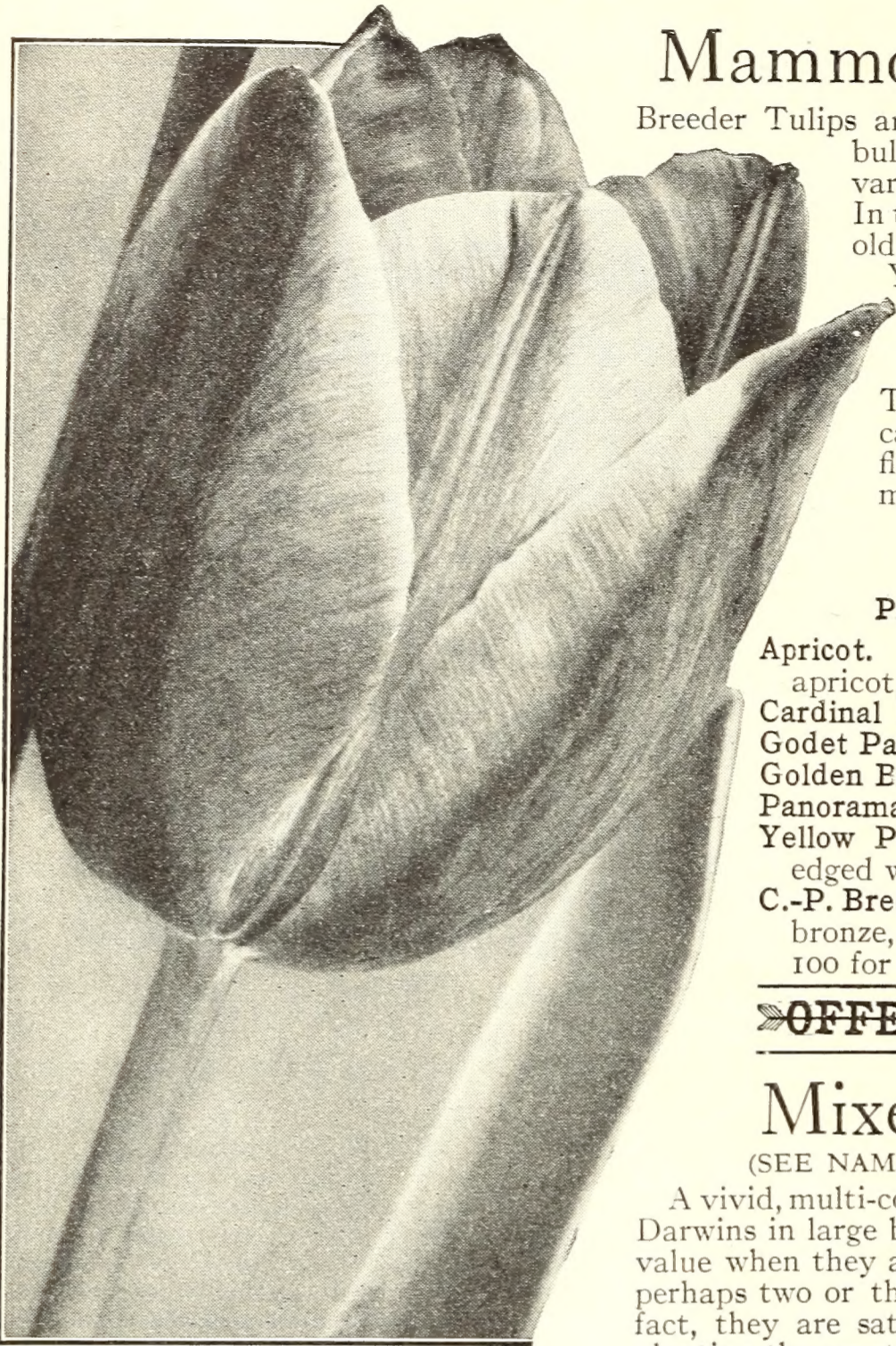
**OFFER** 34 One each of the 6 named Breeder Tulips for 70c., or 5 of each, 30 in all, for \$3, ppd.

## Mixed Darwin Tulips

(SEE NAMED VARIETIES ON OPPOSITE PAGE)

A vivid, multi-colored display can be made by planting Mixed Darwins in large beds by themselves and do not overlook their value when they are grown along the edge of shrub borders or perhaps two or three rows around the base of your porch. In fact, they are satisfactory wherever used and the larger the planting the greater your pleasure when they bloom.

Price, 12 for 60 cts., 100 for \$4.50, 1,000 for \$40, prepaid



Breeder Tulip. Bronze and old gold colors

## Index to Plants

Achillea.....21	Chrysanthemums, Hardy...21	Hedge Plants.....18, 19	Phlox.....21
Adam's Needle.....22	Clematis.....20	Helianthus.....22	Platycodon.....22
Akebia quinata.....20	Columbine.....21	Hemerocallis.....22	Plumbago.....22
Altheas.....16	Coreopsis.....21	Honeysuckle, Bush.....16	Privet.....19
American Ivy.....20	Cornflower Aster.....21	Honeysuckles (4 kinds)....20	Pyrethrum.....22
Ampelopsis.....20	Cypress, Japan (3 varieties)..19	Hydrangeas (2 kinds)...16, 17	Roses.....1-15
Aquilegia (5 kinds).....21	Daisy, Shasta.....22	Iris, Bearded.....22	Rose of Sharon.....16
Arborvitæ (5 varieties)....19	Delphinium.....21	Ivies.....20	Rudbeckia.....22
Balloon Flower.....22	Deutzias.....16	Japanese Bellflower.....22	Shrubs, Hardy.....16, 17
Barberry, Japan.....18	Digitalis (Foxglove).....21	Juniper.....19	Snowball.....17
Bargains.....33	Edging Plants.....18	Larkspur.....21	Snowberry.....17
Beauty Fruit (Callicarpa)..16	English Ivy.....20	Lilac.....17	Spireas.....17
Bittersweet.....20	Eulalia.....22	Lobelia cardinalis.....22	Symphoricarpos.....17
Blanket Flower.....22	Euonymus (3 kinds)....16, 20	Lychnis.....22	Veronica.....22
Boston Ivy.....20	Evergreens.....19	Matrimony Vine.....20	Viburnum.....17
Box Barberry.....18	Ferns.....33	Mock Orange.....16	Vines, Hardy.....20
Box Edging.....18	Forsythias.....16	Pachysandra.....22	Weigelas.....17
Callicarpa Purpurea.....16	Foxglove.....21	Peonies.....23	Wisterias (3 kinds)....20
Calycanthus (Sweet Shrub)16	Funkia.....22	Perennials.....21-23	Yew, Japan (Taxus)....19
Cardinal Flower.....22	Gaillardia.....22	Philadelphus (Mock Orange).....16	Yucca.....22
Celastrus scandens.....20	Golden Glow.....22		

Flowering Plants and Bulbs are always welcome and lasting gifts. We can ship direct to your friends

## Index to Bulbs, Insecticides, Etc.

Amaryllis, (3 kinds).....30	Dust Gun.....32	Jonquils.....29	Seeds for Fall.....32
Belladonna Lily.....30	Easter Lily, Bermuda....30	Lilium candidum.....30	Shears, Pruning.....32
"Black-Leaf 40".....32	Freesias.....31	Madonna Lily.....30	Snowdrops.....31
Book, "How to Grow Roses"32	Giant White Narcissus....29	Narcissus.....29	Sprayer, Rubber.....32
Calla Lilies (Arums).....31	Grape Hyacinths.....31	Oxalis.....31	Star Rose Dust.....32
Chinese Sacred Lily.....30	Grass Seed.....32	Plant Food.....32	Stimulant (Plant Food)..32
Crocus, all varieties.....28	Hyacinths, all kinds.24, 25, 31	Regal Lily.....30	Tulips.....26, 27, 28, 34, 35
Daffodils (Narcissus)....29	Ismene calathina.....30	Scilla.....31	Zephyranthes.....31

# GIANT DARWIN TULIPS



**Brilliant Darwin Tulips,** Nature's gayest early spring flowers, beautiful beyond description, are produced in most intensely brilliant colors. The great bowl-shaped blooms remain for weeks and sway gracefully in the gentle breezes, on long, strong, upright stems.

Lovers of these gorgeous flowers are enchanted with the distinct Tulip fragrance.

Most effective displays are made by massing colors in separate beds, in perennial borders, or even along the edges of shrubbery where they need not be disturbed. They will bloom for years.

- \***BARONNE DE LA TONNAYE.** Vivid pink, margined with silvery rose or blush. (See No. 6.)
- BLEU AIMABLE.** Bright violet, with distinct steel-blue shading, the inside dark purple.
- CENTENNAIRE.** Enormous flowers of rich violet-rose with electric-blue center.
- \***CLARA BUTT.** Soft salmon-pink, shaded with rose, inside much deeper, with blue base. (At foot of above bed.)
- DREAM.** Beautiful, uniform light lilac or pale heliotrope.
- EDMEE.** Vivid shade of cherry-rose, edged with soft old-rose. A most attractive color.
- FAUST.** Lustrous deep pansy-violet color with blue base. Large flower.
- \***GLOW.** Vermilion-scarlet with white base, marked with blue. (See No. 4.)
- ISIS.** Flowers intense fiery scarlet with blue base. Exceptionally brilliant.
- KING HAROLD.** Glossy ox-blood-red with purple-black base; very large flower of fine form.
- LA TRISTESSE.** A Tulip of very distinct color, being a true slate-blue with white base.

- \***LA TULIPE NOIRE.** Color is deep maroon-black, the darkest of all the Tulips. It has a rich velvety sheen in the sunlight. (See No. 5.)
- \***MR. FARNCOMBE SANDERS.** Orange-red with rosy bloom; inside vivid cerise-scarlet. (See No. 3.)
- \***MRS. POTTER PALMER.** Deep purple that goes well with the lavender and red varieties. (See No. 7.)
- NAUTICUS.** Silky carmine-rose; base dark violet, shaded bronze.
- \***PRIDE OF HAARLEM.** Brilliant rosy carmine with electric-blue base; very large flower of superb form. A wonderful Tulip, stately in habit, sweet-scented and unsurpassed for mass planting. (Shown above in natural size.)
- PRINCE OF THE NETHERLANDS.** Glowing cerise-scarlet, flushed salmon-rose; blue base.
- PSYCHE.** Rich rose, inside shaded silvery rose with pale blue base. Very beautiful when massed.
- \***REV. H. EWBank.** Soft lavender-violet or heliotrope, darkening toward the base. (See in above bed.)
- WHITE QUEEN.** Tinted rose at first but becomes pure white. A lovely variety.

**PRICE.** All above named varieties, 8 cts. each, 12 for 85 cts., 100 for \$6.00, postpaid

- OFFER 35.** 3 each of the 8 kinds marked \* (24 bulbs), for.....\$1.50, postpaid
- OFFER 35a.** 10 each of the 8 kinds marked \* (80 bulbs), for..... 4.75, postpaid
- OFFER 35b.** 1 each of the 20 named Darwins for \$1.40; or 5 of each, 100 in all, for..... 5.50, postpaid

## ROSA HUGONIS, "The Golden Rose of China"

This is China's loveliest Rose contribution to this country. An easy-to-grow *Shrub* Rose, so hardy it lives through the severest winters without protection, even in northern Canada. It is usually in full bloom ten days ahead of any other Rose, coming with the daffodils.

Only recently has this exquisite yellow-flowered *Shrub* Rose become known here, but it is *now* in demand by tens of thousands yearly, because its dainty, fairy flowers, in long arching sprays, cover every branch from the root to the tip and are what people of refinement have been looking for to use for table decoration when other *uncommon* flowers are unobtainable. A bouquet of these yellow silken flowers adds a charm to the dining-table, with its snowy linen and silver, that is indescribably lovely.

Mrs. Herbert Harde, editor *Our Garden Journal*, New York, writes: "Beautiful Rosa Hugonis—a lovelier sight than you in bloom I have never, never seen!"

For the first time since this Rose was introduced, we are able to lower the price to **\$1.25 each**; 5 for **\$5.50**; 20 for **\$20**; extra-selected size, **\$2 each**; 6 for **\$10**. Delivery not prepaid.

